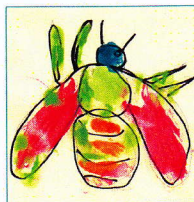




Co-Sponsored by: University of Michigan Health System's
Child Protection Team, University of Michigan Medical School
and University of Michigan Mott Children's Hospital

29th Annual Michigan Statewide Conference

Child Abuse & Neglect: Prevention, Assessment and Treatment



October 18-19, 2010
The Inn at St. John's, Plymouth, Michigan



Conference-at-a-Glance

Monday Morning, October 18

8:00	Registration and Continental Breakfast.....	Garden Gallery
8:30	Welcome and Announcements, Opening Remarks, Child Advocate Award	Grande Ballroom
8:45	Keynote Presentation - Medical Child Abuse: Beyond Munchausen Syndrome by Proxy	Grande Ballroom
10:15	Break	
10:30	Workshop Session I	
	1. Inflicted Fractures in Children: Everything You Always Wanted to Know About Bones and Were Afraid to Ask.....	Wisdom Room
	2. The Maternal-Infant Health Program and Community Collaboration: How It Works	Ruth Room
	3. Maintaining Professional Boundaries for Frontline Workers.....	Nazareth Room
	4. Posttraumatic Stress Disorder in the Context of Childhood Sexual Abuse: Research Findings and Evidence-Based Treatment	Judea Room
	5. Crime Scene Investigation Case: Crime Lab for a Child Abuse and Death Investigation.....	Sarah Room
	6. Meeting the National Children's Alliance Medical Standard.....	Judith Room
	7. Strategies to Identify and Engage At-Risk Families	Galilee Room
12:00	Lunch.....	Atrium
	Medical Advisory Committee Luncheon.....	Grotto Room

Afternoon

1:00	Workshop Session II	
	1. When is Being Too Small a Manifestation for Neglect?	Ruth Room
	2. Taking Care of Self/Handling Job Stress and Dealing with Daily Trauma	Wisdom Room
	3. Kids Setting Fires: The Relationship of Abuse and Firesetting.....	Sarah Room
	4. Sexting, Texting, and Cyber-bullying: The Michigan Internet Crimes Against Children Task Force	Judea Room
	5. Building Allies for LGBTQ Youth	Nazareth Room
	6. The Impact of Children's Advocacy Centers on the Community	Judith Room
	7. Let's Take a Look: Screening for Physical and Social Emotional Development in Young Children	Galilee Room
2:30	Break	
2:45	Workshop Session III	
	1. Medical Evidence and Issues in Sexual Abuse Investigations: How the Latest in Medical Evidence Can Assist Sexual Abuse Investigations and Prosecutions	Wisdom Room
	2. Helping Foster Children Connect with New Parents	Nazareth Room
	3. Preventing Removals by Supporting Families: The Detroit Center for Family Advocacy	Ruth Room
	4. Domestic Violence and Child Abuse/Neglect Legal Update	Judea Room
	5. Permanency Planning for Youth Transitioning from Foster Care.....	Sarah Room
	6. Strengthening Your Multidisciplinary Team	Judith Room
	7. Putting the Strengthening Families Five Protective Factors Model into Practice.....	Galilee Room
4:15	Session Adjourns	
4:30	MiPSAC 15th Annual Meeting	Boardroom
	CTF Local Council and Direct Service Peer Sessions	Galilee Room

Conference-at-a-Glance

Tuesday Morning, October 19

8:00	Registration and Continental Breakfast.....	Garden Gallery
8:45	Welcome and Announcement/Opening Remarks.....	Grande Ballroom
9:00	Keynote Presentation: Controversies and Conspiracy Theories	Grande Ballroom
10:15	Break	
10:30	Workshop Session IV	
	1. Short Falls.....	Nazareth Room
	2. The Mom Power Group: Supporting At-Risk Mothers in their Parenting Practice	Wisdom Room
	3. Parental Development Disabilities and Permanency Planning.....	Ruth Room
	4. Acquaintance Child Molesters.....	Galilee Room
	5. Treating Traumatized Children and Trauma Focused Cognitive Behavioral Therapy: Part I	Judea Room
	6. Updates to Michigan's Forensic Interviewing Protocol	Sarah Room
	7. Circle of Parents.....	Judith Room
12:00	Lunch.....	Atrium

Afternoon

1:00	Plenary Presentation: Overview of Sexual Victimization of Children	Grande Ballroom
2:00	Break	
2:15	Workshop Session V	
	1. Child Maltreatment in the Setting of Caregiver Mental Illness	Wisdom Room
	2. Poverty, the Economy, and Child Abuse and Neglect	Galilee Room
	3. The Role of the Michigan Children's Institute (MCI) in Permanency Planning.....	Ruth Room
	4. Domestic Violence as it Relates to Child Abuse and Neglect.....	Sarah Room
	5. Treating Traumatized Children and Trauma Focused Cognitive Behavioral Therapy: Part II.....	Judea Room
	6. The Period of PURPLE Crying: Implementing an Evidence-Based Prevention Program	Judith Room
3:45	Course Adjourns	

On the First Floor:

- Galilee Room
- Garden Gallery
- Grande Ballroom
- Judea Room
- Nazareth Room

On the Second Floor:

- Judith Room
- Ruth Room
- Sarah Room

On the Lower Level:

- Atrium (Lunch)
- Wisdom Room

Special Thanks

- The Michigan Children's Trust Fund for their sponsorship.



Faculty Announcements

We are pleased to welcome Sgt. Stephen Darling, Sgt. Aimee Maike, and Leigh Moerdyke to this year's faculty.

Sgt. Darling will be stepping in for Robert Wolford. He will be presenting "Taking Care of Self/Handling Job Stress and Dealing with Daily Trauma" on Monday in Workshop Session II.

Sgt. Maike will be filling in for F/Lt. Dave Greyganus. She will be presenting "Domestic Violence and Child Abuse/Neglect Legal Update" on Monday in Workshop Session III.

Ms. Moerdyke, along with Joyce A. Bos, will be stepping in for Betsy Hardy, Brooke Netz and Lisa Peacock. They will be presenting "The Period of PURPLE Crying: Implementing an Evidence-Based Prevention Program" on Tuesday in Workshop Session V.

2010 Presentations

Presentations, including those not on the CD, can be downloaded from the conference website:

<http://cme.med.umich.edu/childconference>

Materials will be available through October 30, 2010.

Program Overview

We welcome you to the 29th Annual Michigan Statewide Conference on Child Abuse and Neglect, October 18 and 19, 2010. Successful conference tradition continues this year with featured distinguished national and regional experts presenting the most recent advances in the field. Professionals will experience an interactive and networking environment with over thirty workshops from which to choose.

Keynote and Plenary Presenters:

Mark Dias, MD, FAAP, is Professor and Vice Chair of Clinical Neurosurgery and Director of Pediatric Neurosurgery at Penn State Hershey Medical Center and the Penn State University College of Medicine. Dr. Dias has established a research interest in Abusive Head Trauma (AHT) over the past 13 years and has published articles on etiology, demographics, radiography, and prevention of AHT. Dr. Dias will present a keynote presentation about abusive head trauma, reviewing both legitimate scientific controversies in the diagnosis of AHT and the evidence base for other "conspiracy" theories.

Suzanne Starling, MD, FAAP, is a fulltime child abuse pediatrician, Professor of Pediatrics at Eastern Virginia Medical School, Director of the Child Abuse Pediatrics fellowship, and Medical Director of the Child Abuse Program at Children's Hospital of The King's Daughters in Norfolk, Virginia. She lectures internationally for medical, investigative, and legal audiences. She has published more than 25 journal articles and book chapters in the field of child abuse. Dr. Starling's keynote presentation is "Medical Child Abuse: Beyond Munchausen Syndrome by Proxy."

Kenneth Lanning is a consultant in the area of crimes against children. He was a Special Agent with the FBI for more than 30 years and was assigned to the FBI Behavioral Science Unit at the FBI Academy for 20 of those years. He is a current member of the Advisory Board of the Association for the Treatment of Sexual Abusers (ATSA). Mr. Lanning is the 1996 recipient of the Outstanding Professional Award from APSAC and the 2009 recipient of the Lifetime Achievement Award for Outstanding Service from the National Children's Advocacy Center. He has lectured before thousands of criminal justice professionals. "Overview of Sexual Victimization of Children."

Target Audience:

The course is designed for participants who are: social workers; child welfare specialists in child abuse and neglect, prevention, foster care, adoption and juvenile justice services; physicians, nurses, mental health and other medical professionals; law enforcement, attorneys, judges, child advocates, and educators.

Conference Goals:

At the conclusion of the conference, participants will:

- Have knowledge about the most recent advances in the field and application to practice
- Recognize symptoms of abused and neglected children in complex presentations
- Understand the source of child behavior when children are abused and neglected
- Be able to successfully intervene and plan treatment for children
- Understand successful prevention models in child abuse and neglect

At the end of the first day of the conference, you are invited to attend the annual meeting of Michigan Professional Society on the Abuse of Children (MiPSAC), which is the state-recognized chapter of the American Professional Society on the Abuse of Children (APSAC). This important organization focuses on meeting the needs of professionals who practice in areas of child maltreatment. All conference attendees are encouraged to attend to learn more about MiPSAC and become a part of this invaluable organization.

This year, with strong support from the Michigan Children's Trust Fund, we offer additional workshops focusing on prevention. At the end of the first day of the conference, Children's Trust Fund grantees are invited and encouraged to attend their local council or direct service peer session. This session will provide an opportunity to network with peers and learn about current CTF initiatives.

The Michigan Chapter of the National Children's Alliance also continues to support the conference with workshops focusing on Child Advocacy.

The conference committee planners are very pleased to have our highly-regarded presenters, outstanding agenda and wonderful location at the Inn at St. John's in Plymouth, Michigan. We look forward to seeing you in October.

Suzanne Cavanagh, LMSW
Course Director
Coordinator, University of Michigan Child Protection Team

Planning Committee

Arlene Bradford, BA
Assistant Director
Office of Continuing
Medical Education
Department of Medical
Education
University of Michigan
Medical School

Suzanne Cavanagh, LMSW
Course Director
Coordinator
Child Protection Team
Abuse Prevention Initiative
University of Michigan
Health System

Michele Y. Davenport
Manager
Child Welfare Institute
Department
of Human Services
Detroit, Michigan

Sarah M. Davis
Senior Program
Development Coordinator
Children's Trust Fund

Linda K. DeVries, LMSW
Clinical Social Worker
Child Protection Team
University of Michigan
Health System

Erika Engel
State Coordinator
Governor's Task Force
on Children's Justice
Children's Protective
Services Program Office
Michigan Department of
Human Services

Patricia Headley
Fund Development
Coordinator
Children's Trust Fund

Cathi Kelley, LMSW
Program Director
Washtenaw Child
Advocacy Center
Catholic Social Services
of Washtenaw County

F/Lt. Mike Krumm
Training and Standards
Division
Michigan State Police

Zoë Lyons, BS
Program Director
Bureau of Child Welfare
Children's Protective
Services and
Family Preservation
Michigan Department
of Human Services

Lisa Markman, MD, FAAP
Assistant Professor
Associate Medical Director
Child Protection Team
Pediatric Hospitalist
Department of Pediatrics
and Communicable Diseases
University of Michigan
Health System

Bethany A. Mohr, MD, FAAP
Assistant Professor
Medical Director
Child Protection Team
Pediatric Hospitalist
Department of Pediatrics
and Communicable Diseases
University of Michigan
Health System

Mary B. Ortega, LMSW, ACSW
Clinic Administrator
Family Assessment Clinic
University of Michigan
School of Social Work

Maribeth Preston
Management Analyst
Child Welfare Services
State Court
Administrative Office
Michigan Supreme Court

M. Jeffrey Sadler, BS, MBA
Bureau of Child Welfare
Michigan Department of
Human Services

Monica D. Sampson, LMSW
Child Protective Services
Supervisor
Department of Human
Services, Wayne County

Faculty

Karla Ahrns Klas, BSN, RN, CCRP
Injury Prevention Specialist
University of Michigan Trauma
Burn Center
Ann Arbor, Michigan

Orli Klier Avi-Yonah, PhD, LCSW
Consultant, Family Assessment Clinic
Department of Psychiatry
University of Michigan
Ann Arbor, Michigan

Connie Black-Pond, MA, MSW, LPC
Clinical Director
Southwest Michigan Children's
Trauma Assessment Center
Kalamazoo, Michigan

Joyce A. Bos, MA
Program Director, Ottawa Child Abuse
and Neglect Council
Western Great Start Regional
Resource Center
Holland, Michigan

Karen Boyce, MS
Clinical Director, Ozone House
Ann Arbor, Michigan

Nancy Colon
Parent Advocate, Detroit Legal Clinic
Detroit, Michigan

Sylvia J. Brown Jones, LMSW
State Program Coordinator
Circle of Parents Initiative
Children's Trust Fund
Michigan Department
of Human Services
Lansing, Michigan

Catherine S. Connell, LMSW, ACSW
Child/Adolescent Interviewer
Office of Victim Assistance
Federal Bureau of Investigation
Clinton Township, Michigan

Sgt. Stephen Darling
Michigan State Police
Lansing, Michigan

Beverly Davidson, LMSW, IMH-E(III)
Coordinator, Maternal-Infant
Health Program and Early On
Washtenaw County Health
Department
Ypsilanti, Michigan

Mark Dias, MD, FAAP
Professor and Vice Chair
Clinical Neurosurgery
Penn State Hershey Medical Center
Penn State University College
of Medicine
Director, Pediatric Neurosurgery
Department of Neurosurgery
Hershey, Pennsylvania

Kathleen Coulborn Faller, PhD, ACSW, LMSW
Marion Elizabeth Blue Professor
of Children and Families
School of Social Work
University of Michigan
Ann Arbor, Michigan

Tracy Green, JD
Managing Attorney
Detroit Legal Clinic
Detroit, Michigan

Sgt. Nathan Gross
Jackson City Police Department
Jackson, Michigan

William J. Johnson
Superintendent
Michigan Children's Institute
Lansing, Michigan

Jacinda Jones
Early On Coordinator
Michigan Department
of Human Services
Lansing, Michigan

Julie Kaplow, PhD
Assistant Professor
Department of Psychiatry
Adjunct Assistant Professor
Department of Psychology
University of Michigan
Ann Arbor, Michigan

Darcy Komejan, MA
Executive Director
The Children's Advocacy Center
of Ottawa County
Holland, Michigan

Kenneth V. Lanning
FBI (Retired)
Fredericksburg, VA

Sgt. Josh Lator
Michigan State Police
Trooper Development Section
Lansing, Michigan

Doug Lewis
Bay County Youth Board
Essexville, Michigan

Lisa Markman, MD, FAAP
Assistant Professor
Associate Medical Director
Child Protection Team
Pediatric Hospitalist, Department of
Pediatrics and Communicable Diseases
University of Michigan
Ann Arbor, Michigan

Sgt. Aimee Maike, JD
Michigan State Police
Lansing, Michigan

Teresa Marvin
Parent Liaison, Michigan Department of
Human Services
Lansing, Michigan

Leigh Moerdyke
Program Supervisor, Pathways
Holland, Michigan

Bethany A. Mohr, MD, FAAP
Assistant Professor
Medical Director
Child Protection Team
Pediatric Hospitalist
Department of Pediatrics and
Communicable Diseases
University of Michigan Health System
Ann Arbor, Michigan

Maria Muzik, MD
Assistant Professor
Department of Psychiatry
University of Michigan
Principal Investigator
Mom Power Demonstration Project
Ann Arbor, Michigan

Dena Nazer, MD, FAAP
Medical Director
Child Protection Center
Children's Hospital of Michigan
Assistant Professor, Wayne State
University
Detroit, Michigan

Dee Obrecht
Executive Director
Children's Trust Fund Local Council
Isabella County
Mt. Pleasant, Michigan

Mary B. Ortega, ACSW, LMSW
Clinic Administrator
Family Assessment Clinic
School of Social Work
University of Michigan
Ann Arbor, Michigan

Debra Poole, PhD
Professor of Psychology
Central Michigan University
Mt. Pleasant, Michigan

Detective Sgt. Jay Poupard
Michigan State Police
Computer Crimes Unit
Lansing, Michigan

Julie Ribaud, ACSW, LMSW, IMH-E (IV)
Clinical Assistant Professor
School of Social Work
University of Michigan
Ann Arbor, Michigan

Kate Rosenblum, PhD
Assistant Professor
Department of Psychiatry
University of Michigan
Clinical Supervisor and
Co-Principal Investigator
Mom Power Demonstration Project
Ann Arbor, Michigan

Vivek Sankaran, JD
Program Director,
Detroit Legal Clinic
Detroit, Michigan

Randall Schlievert, MD
Chief Academic Officer
Mercy St. Vincent Medical Center
Director, Child Abuse Program
Mercy Children's Hospital
Toledo, Ohio

Linda Schmidt, MSW
Poverty Policy Director
Michigan Department
of Human Services
Lansing, Michigan

Melisa Schuster, LMSW, CAAC
Coordinator
Maternal-Infant Health Program
University of Michigan Health System
Mom Power Facilitator
Ann Arbor, Michigan

Suzanne P. Starling, MD, FAAP
Medical Director
CHKD Child Abuse Program
Children's Hospital of the King's
Daughters
Professor of Pediatrics
Eastern Virginia Medical School
Norfolk, Virginia

Kathleen Strader, MSW
Director, Healthy Families
America Central Region
Prevent Child Abuse America
Beverly Hills, Michigan

Kori Tudor
Outreach Coordinator
Midwest Regional Children's
Advocacy Center
St. Paul, Minnesota

Jamila Weathers, MSW
Social Worker, Detroit Legal Clinic
Detroit, Michigan

Barbara J. Welke, LMSW
Director and Forensic
Interview Specialist
Children's Assessment Center
of Berrien County
St. Joseph, Michigan

Program Schedule - Monday, October 18 (11.25 credit hours for full course)

Monday Morning, October 18

- 8:00 Registration and Continental Breakfast..... *The Inn at St. John's*
- 8:30 Welcome and Announcements..... *Arlene Bradford, BA*
Opening Remarks..... *Michael D. Foley, MSW; Executive Director, Children's Trust Fund*
..... *Bethany A. Mohr, MD, FAAP*
Presentation of 2010 MiPSAC Child Advocate Award..... *Charlie Enright, JD, MSW*
- 8:45 **Keynote Presentation - Medical Child Abuse: Beyond Munchausen Syndrome by Proxy**..... *Suzanne P. Starling, MD, FAAP*
- 10:15 Break
- 10:30 **Workshop Session I**
1. Inflicted Fractures in Children: Everything You Always Wanted to Know About
Bones and Were Afraid to Ask..... *Suzanne P. Starling, MD, FAAP*
 2. The Maternal-Infant Health Program and Community Collaboration:
How It Works..... *Melisa Schuster, LMSW, CAAC, MIHP; Beverly Davidson, LMSW, IMH-E (III), MIHP*
 3. Maintaining Professional Boundaries for Frontline Workers..... *Orli Klier Avi-Yonah, PhD*
 4. Posttraumatic Stress Disorder in the Context of Childhood Sexual Abuse:
Research Findings and Evidence-Based Treatment..... *Julie Kaplow, PhD*
 5. Crime Scene Investigation Case: Crime Lab for a Child Abuse and Death Investigation..... *Sgt. Nathan Gross*
 6. Meeting the National Children's Alliance Medical Standard..... *Kori Tudor*
 7. Strategies to Identify and Engage At-Risk Families..... *Kathleen Strader, MSW*
- 12:00 Lunch

Afternoon

- 1:00 **Workshop Session II**
1. When is Being Too Small a Manifestation for Neglect?..... *Dena Nazer, MD, FAAP*
 2. Taking Care of Self/Handling Job Stress and Dealing with Daily Trauma..... *Sgt. Stephen Darling*
 3. Kids Setting Fires: The Relationship of Abuse and Firesetting..... *Karla Ahrns Klas, BSN, RN, CCRP*
 4. Sexting, Texting, and Cyber-bullying: The Michigan Internet Crimes Against Children Task Force..... *Detective Sgt. Jay Poupard*
 5. Building Allies for LGBTQ Youth..... *Karyn Boyce, MS*
 6. The Impact of Children's Advocacy Centers on the Community..... *Kori Tudor*
 7. Let's Take a Look: Screening for Physical and Social Emotional Development in Young Children..... *Jacinda Jones; Teresa Marvin*
- 2:30 Break
- 2:45 **Workshop Session III**
1. Medical Evidence and Issues in Sexual Abuse Investigations: How the Latest in Medical Evidence
Can Assist Sexual Abuse Investigations and Prosecutions..... *Randall Schlievert, MD*
 2. Helping Foster Children Connect with New Parents..... *Julie Ribaud, LMSW, ACSW, IMH-E(IV)*
 3. Preventing Removals by Supporting Families:
The Detroit Center for Family Advocacy..... *Nancy Colon; Tracy Green, JD; Vivek Sankaran, JD; Jamila Weathers, MSW*
 4. Domestic Violence and Child Abuse/Neglect Legal Update..... *Sgt. Aimee Maike, JD*
 5. Permanency Planning for Youth Transitioning from Foster Care..... *Doug Lewis; Bay County Youth Panel*
 6. Strengthening Your Multidisciplinary Team..... *Darcy Komejan, MA; Barbara Welke, LMSW*
 7. Putting the Strengthening Families Five Protective Factors Model into Practice..... *Joyce A. Bos, MA*
- 4:15 Session Adjourns
- 4:30 **MiPSAC 15th Annual Meeting**
All conference attendees are invited to attend this meeting. Come and learn more about the Michigan Professional Society on the Abuse of Children (MiPSAC) and what part you can play in this dynamic and important state organization.
Election of 2011 Officers/Board Members and Annual Meeting. Meeting adjourns at 6:00 pm.
- CTF Local Council and Direct Service Peer Sessions**
All local council and direct service grantees are invited and encouraged to attend this session. The session will provide an opportunity for programs to share successes, challenges, needs, and ideas for working together in collaborative partnerships. CTF staff will also provide updates on current initiatives and work group activities.

Program Schedule - Tuesday, October 19

Tuesday Morning, October 19

8:00	Registration and Continental Breakfast.....	<i>The Inn at St. John's</i>
8:45	Welcome and Announcements	<i>Lisa Markman, MD, FAAP</i>
	Opening Remarks	<i>Zoë Lyons, BS</i>
9:00	Keynote Presentation: Controversies and Conspiracy Theories	<i>Mark Dias, MD, FAAP</i>
10:15	Break	
10:30	Workshop Session IV	
	1. Short Falls	<i>Mark Dias, MD, FAAP</i>
	2. The Mom Power Group: Supporting At-Risk Mothers in their Parenting Practice	<i>Maria Muzik, MD, MS; Kate Rosenblum, PhD; Melisa Schuster, LMSW, CAAC</i>
	3. Parental Development Disabilities and Permanency Planning	<i>Kathleen Coulborn Faller, PhD, LMSW, ACSW; Mary B. Ortega, LMSW, ACSW</i>
	4. Acquaintance Child Molesters	<i>Kenneth V. Lanning (FBI Retired)</i>
	5. Treating Traumatized Children and Trauma Focused Cognitive Behavioral Therapy: Part I.....	<i>Connie Black-Pond MA, LMSW, LPC</i>
	6. Updates to Michigan's Forensic Interviewing Protocol	<i>Catherine S. Connell, LMSW, ACSW; Debra Poole, PhD</i>
	7. Circle of Parents	<i>Sylvia J. Brown Jones, LMSW; Dee Obrecht</i>
12:00	Lunch	

Afternoon

1:00	Plenary Presentation: Overview of Sexual Victimization of Children	<i>Kenneth V. Lanning (FBI Retired)</i>
2:00	Break	
2:15	Workshop Session V	
	1. Child Maltreatment in the Setting of Caregiver Mental Illness.....	<i>Lisa Markman, MD, FAAP; Bethany A. Mohr, MD, FAAP</i>
	2. Poverty, the Economy, and Child Abuse and Neglect.....	<i>Linda Schmidt, MSW</i>
	3. The Role of the Michigan Children's Institute (MCI) in Permanency Planning	<i>William J. Johnson</i>
	4. Domestic Violence as it Relates to Child Abuse and Neglect	<i>Sgt. Joshua Lator</i>
	5. Treating Traumatized Children and Trauma Focused Cognitive Behavioral Therapy: Part II	<i>Connie Black-Pond MA, LMSW, LPC</i>
	6. The Period of PURPLE Crying: Implementing an Evidence-Based Prevention Program.....	<i>Joyce A. Bos, MA; Leigh Moerdyke</i>
3:45	Course Adjourns	

Monday, October 18, 2010

Keynote Presentation: 8:45 am - 10:15 am

Medical Child Abuse: Beyond Munchausen Syndrome by Proxy

Presenter: Suzanne P. Starling, MD, FAAP

The presentation will discuss Munchausen Syndrome by Proxy from an historical perspective, then it will define Medical Child Abuse in contrast to MSBP and describe its utility in protecting children. The presentation also will provide a useful framework for medical providers to diagnose and manage Medical Child Abuse. The medical child abuse structure also improves the collaboration between medical personnel and investigative/protective agencies.

Workshop Session I: 10:30 am - 12:00 pm

1. Inflicted Fractures in Children: Everything You Always Wanted to Know About Bones and Were Afraid to Ask

Presenter: Suzanne P. Starling, MD, FAAP

The presentation will cover the medical evaluation of fractures of abuse. Starting with bone structure, bone types, and bone building, the seminar will progress to the forces required to break bone as well as the properties of bones. Also discussed will be types and examples of fractures of abuse, and conditions that are confused with abusive fractures, such as accidents, medical illnesses, and falls.

2. The Maternal-Infant Health Program and Community Collaboration: How It Works

Presenters: Melisa Schuster, LMSW, CAAC, MIHP;

Beverly Davidson, LMSW, IMH-E (III), MIHP

This presentation will describe the Maternal-Infant Health Program, a statewide Medicaid-funded program designed to reduce risk factors associated with infant mortality and morbidity. The presenters will discuss the Maternal Infant Mental Health Program and its role in collaborating with Child Protective Services, Early On, and other community resources. Case examples will illustrate how collaboration works effectively and successfully.

3. Maintaining Professional Boundaries for Frontline Workers

Presenter: Orli Klier Avi-Yonah, PhD

The emotional, physiological and spiritual impact on frontline workers who deal with traumatic events and traumatized people is by now well documented. This talk seeks to explore both the personal consequences e.g. "compassion fatigue" as well as the institutional ones. The role of resiliency and ways of increasing resiliency will be explored. Finally, the role of ongoing education and careful monitoring of one's personal and professional boundaries will be highlighted.

4. Posttraumatic Stress Disorder in the Context of Childhood Sexual Abuse: Research Findings and Evidence-Based Treatment

Presenter: Julie Kaplow, PhD

Post-traumatic Stress Disorder (PTSD) is an unfortunate, debilitating, and common psychological response in children who have experienced sexual abuse. This workshop will provide a brief overview of recent research examining risk factors associated with PTSD in sexually abused children and will present major components of an evidence-based treatment for PTSD called Trauma-Focused Cognitive-Behavioral Therapy. A case study of a sexually abused child will also be presented to exemplify the use of this treatment.

5. Crime Scene Investigation Case: Crime Lab for a Child Abuse and Death Investigation

Presenter: Sgt. Nathan Gross

The workshop will focus on a law enforcement perspective for exploring the process of a crime scene search for child abuse and death investigations. The presentation will feature a case example of one such investigation.

6. Meeting the National Children's Alliance Medical Standard

Presenter: Kori Tudor

This workshop will provide a brief history of why medical examinations are a key part of child abuse investigations and a synopsis of the recent research that has greatly influenced the creation of National Children's Alliance's new Medical Standard. Moreover, this workshop will provide a wealth of resources and training information about how your Child Advocacy Center can meet the new standard.

7. Strategies to Identify and Engage At-Risk Families

Presenter: Kathleen Strader, MSW

Participants will learn new strategies to engage and retain hard-to-reach families in home visiting and other prevention programs. Through the presentation of recent research findings that identify factors related to program refusal and drop-out and discussion of "real-world" techniques, the workshop will address how program staff can increase family involvement, build community partnerships and improve program outcomes.

Workshop Session II: 1:00 pm - 2:30 pm

1. When is Being Too Small a Manifestation for Neglect?

Presenter: Dena Nazer, MD, FAAP

Failure to thrive (FTT) is used to describe a significantly prolonged cessation of appropriate weight gain compared with recognized norms for age and gender. Many causes of failure to thrive are unintentional and reflect feeding difficulties, improper feeding or chronic diseases. Neglect is a cause of FTT that warrants special attention. Professionals need to be aware of risk factors of neglect, be able to suspect neglect as a contributing factor, and report these cases to protective services when appropriate. In this workshop, several illustrative cases on the approach, assessment, diagnosis and follow up of children with FTT will be discussed. A special emphasis will be made on neglect as a contributing factor for FTT.

2. Taking Care of Self/Handling Job Stress and Dealing with Daily Trauma

Presenter: Sgt. Stephen Darling

This presentation will cover the basics of trauma, vicarious traumatization, physical and emotional impact, and taking care of self. Participants will gain insight into the ways that child welfare professionals are affected by and are able to manage trauma.

3. Kids Setting Fires: The Relationship of Abuse and Firesetting

Presenter: Karla Ahrns Klas, BSN, RN, CCRP

According to a 2009 report by the National Fire Protection Association (NFPA), children playing with fire (intentional incidents not included) were responsible for an estimated 14,500 structure fires, 130 civilian deaths, 810 civilian injuries, and \$328 million in direct damage in the U.S. Juvenile firesetters have diverse motives, including curiosity and experimentation, anger and cries for help, negative peer pressure leading to juvenile delinquency, or presence of multiple emotional disturbances. Research shows a strong link between child abuse and youth who set fires, with abuse incidence rates reported as high as 50% in this specific population. Without appropriate intervention, many of these juveniles will continue to set fires throughout their lifetime. As our understanding has grown regarding the many different circumstances that can lead to firesetting, it is apparent that intervention must be multi-faceted in approach in order to successfully eradicate dangerous firesetting behaviors. Key components of effective intervention are recognizing and addressing abuse and mental health issues.

4. Sexting, Texting, and Cyber-bullying: The Michigan Internet Crimes Against Children Task Force

Presenter: Detective Sgt. Jay Poupard

Child exploitation has dramatic affects on children nationwide. It is critical for our educators as teachers, parents, and guardians to understand the impact of growing up too fast in the online environment. At a time when children have never had greater opportunity for internet connectivity, it is equally as important for our educators to have knowledge of the Internet Crimes Against Children Task Force. This session will include a brief description of the Michigan State Police Digital Evidence Section and forensic data recovery capabilities, followed by a detailed explanation of the Department of Justice Program, the Internet Crimes Against Children Task Force and how Michigan Law Enforcement have partnered to continue protecting our children at the digital level statewide. The session will include an in depth look at how the internet is being used to victimize and exploit children all over the world affecting child exploitation as it pertains to internet use.

5. Building Allies for LGBTQ Youth

Presenters: Karyn Boyce, MS

This workshop is interactive and activity-based. Participants will move around and have many discussions so they can learn from the facilitator(s) and each other. The goals are to have participants learn about biases and challenges that lesbian, gay, bisexual, transgendered and queer (LGBTQ) youth face and to gain information about how to be a supportive person in our communities and professional settings. At the end of the training participants will have an understanding of what it really means to be an ally and what they can do to not only be an ally to LGBTQ youth but also increase their visibility to these youth. Participants of various experience and comfort levels with LGBTQ issues are appropriate for this training.

6. The Impact of Children's Advocacy Centers on the Community

Presenter: Kori Tudor

Learn how Children's Advocacy Centers (CAC) are an effective approach to child abuse investigations. Not only are CACs more cost effective, they provide a less traumatic experience for the child. Concepts to be discussed include: Multidisciplinary Team composition, employing a child-focused approach, cost effectiveness and CAC standards of operation.

7. Let's Take a Look: Screening for Physical and Social Emotional Development in Young Children

Presenters: Jacinda Jones; Teresa Marvin

Participants will gain knowledge of the benefits of standardized screening tools for atypical development and appropriate referrals when needed. Information about screening tools, such as the Ages & Stages Questionnaire, will also be shared.

Workshop Session III: 2:45 pm - 4:15 pm

1. Medical Evidence and Issues in Sexual Abuse Investigations: How the Latest in Medical Evidence Can Assist Sexual Abuse Investigations and Prosecutions

Presenter: Randall Schlievert, MD

This presentation will cover the latest in medical studies and practice to answer questions frequently raised during investigations and trials. Questions explored will include: Are findings related to the frequency and type of abuse? How can we maximize medical findings? What is the value of the medical history? What types of evidence may be overlooked? How solid is our medical evidence and where are the controversies? The overall goal is to give investigators, lawyers and frontline medical providers tools to better care for and protect children.

2. Helping Foster Children Connect with New Parents

Presenter: Julie Ribaud, LMSW, ACSW, IMH-E IV

Children with histories of insecure attachment, abuse, neglect or witnessing family violence enter new families with a relationship "lens" that can create difficult, negative behavior. This workshop will address concrete ways that families can promote a sense of safety and calm, and can work to facilitate trust, all of which lead to better emotional regulation and behavior.

3. Preventing Removals by Supporting Families: The Detroit Center for Family Advocacy

Presenters: Vivek Sankaran, JD; Tracy Green, JD; Jamila Weathers, MSW; Nancy Colon

This session will explore ways in which the child welfare system can reduce the unnecessary removal of children from their homes by supporting families. The work of the Detroit Center for Family Advocacy will be highlighted. Through case examples, statistics and a discussion of the innovative model, participants will be introduced to a different way of responding to the needs of at-risk families.

4. Domestic Violence and Child Abuse/Neglect Legal Update

Presenter: Sgt. Aimee Maike, JD

This presentation will offer a review of updates in the child abuse laws, as well as an update in the domestic violence laws. The talk will also review other legal issues that are applicable to child abuse and neglect investigations.

5. Permanency Planning for Youth Transitioning from Foster Care

Presenters: Doug Lewis; Bay County Youth Panel

A panel of youth experts will discuss issues of youth transitioning from foster care, from a youth's perspective. Topics include: recommendations for the child welfare system, devoting resources to keep families together, maintaining sibling connections, involving youths in decisions, and ensuring youths have appropriate education and housing before leaving foster care. An important focus is the need for all young people to have a permanent connection to a caring adult before leaving foster care.

6. Strengthening Your Multidisciplinary Team

Presenters: Darcy Komejan, MA; Barbara Welke, LMSW

This workshop will look at the shift in perspective that comes with working collaboratively on cases of child abuse. We will examine the benefits of a high-functioning multidisciplinary team and talk about the development of an interagency agreement and team investigation protocol. Finally, we will explore the turf issues that inevitably surface as we share case information and investigative responsibilities.

7. Putting the Strengthening Families Five Protective Factors Model into Practice

Presenter: Joyce A. Bos, MA

The presentation will provide an overview of the Strengthening Families Model as well as how the Western Michigan Child Maltreatment Prevention Team is utilizing the protective factors model for regional planning and training. Participants will learn how to incorporate this model into community action plans.

Tuesday, October 19, 2010

Keynote Presentation: 9:00 am - 10:15 am

Controversies and Conspiracy Theories

Presenter: Mark Dias, MD, FAAP

The past 15 years have seen significant progress in our understanding of abusive head trauma (AHT), although some legitimate controversies remain. In addition, a small number of people, primarily those who testify exclusively for defense in such cases, have advanced what should be considered 'conspiracy theories' lacking sufficient evidentiary support to be considered true alternatives in such cases. This talk will review both legitimate scientific controversies in the diagnosis of AHT and review the evidence base for such conspiracy theories.

Workshop Session IV: 10:30 am - 12:00 pm

1. Short Falls

Presenter: Mark Dias, MD, FAAP

Short falls are sometimes offered as a plausible mechanism of injury in cases of suspected abusive head trauma (AHT). Although short falls can rarely produce intracranial injuries, the frequency with which this occurs is low, the overall pattern of intracranial injuries differs from that seen in AHT, presentations and outcomes are different, and the true diagnosis is rarely in doubt. This talk will review the evidentiary base for intracranial injuries in short falls and contrast this with intracranial injuries seen in AHT.

2. The Mom Power Group: Supporting At-Risk Mothers in their Parenting Practice

Presenters: Maria Muzik, MD, MS; Kate Rosenblum, PhD; Melisa Schuster, LMSW, CAAC

Mom Power is a 10-week attachment-based parenting and self-care skills curriculum designed to reduce maternal mental health symptoms and enhance mother-child attachment by using Circle of Security™ concepts and by teaching mind-body self-care skills. Presenters will describe the Mom Power philosophy and curriculum, present preliminary evaluation results, and provide examples of key strategies employed to support the development of parenting skills of at-risk mothers.

3. Parental Development Disabilities and Permanency Planning

Presenters: Kathleen Coulborn Faller, PhD, LMSW, ACSW; Mary B. Ortega, LMSW, ACSW

This workshop will address how child welfare mandates interface with the Americans with Disabilities Act (ADA). Strategies for assessment and intervention to assist developmentally challenged parents and their children will be described. A case illustration, including videotaped examples will be an integral part of this workshop.

4. Acquaintance Child Molesters

Presenter: Kenneth V. Lanning (FBI Retired)

If child molesters are divided into three categories (i.e., stranger, family member, and acquaintance), it is the acquaintance molester who is most ignored and least understood. This presentation will discuss the dynamics of acquaintance molestation cases and how they are different from those of the more commonly investigated cases of one-on-one intrafamilial sexual abuse. The victim and offender behavior patterns, the grooming process, variations in "sexual" behavior, difficulties of dealing with multiple, older victims who have been seduced, compliant child victims, and corroborative investigative techniques will be briefly discussed.

5. Treating Traumatized Children and Trauma-Focused Cognitive Behavioral Therapy: Part I

Presenter: Connie Black-Pond MA, LMSW, LPC

Part I will address the affects of traumatic exposure on children, including implications for their attachments, diagnosis and treatment. Case examples will illustrate the often complex nature of trauma-related symptomology and the need for trauma informed diagnosis and evidence-based treatments such as Trauma Focused Cognitive Behavioral Therapy.

6. Updates to Michigan's Forensic Interviewing Protocol

Presenters: Catherine S. Connell, LCSW; Debra Poole, PhD

This workshop will provide an overview of current research on forensic interviewing, with a focus on research used to update Michigan's Forensic Interviewing Protocol. The material will include a summary of updates to Michigan's Forensic Interviewing Protocol, with a focus on revealing physical evidence to a child during an interview.

7. Circle of Parents

Presenters: Sylvia J. Brown Jones, LMSW; Dee Obrecht

This prevention workshop is for parent leaders, program managers and group facilitators. During these challenging social and economic times, parents need a place more than ever to go for support and effective coping strategies, and community agencies need a safe place to send them to. This interactive workshop will model the dynamics of a Circle of Parents mutual self-help group. Learn how the program provides a place for parents to connect with, learn from, and be sources of strength for each other, through group meetings co-led by parents and professionals. Participants will gain a basic understanding of the Circle of Parents model, the importance of positive fatherhood involvement, how to implement a new Circle of Parents program or integrate it into an existing program, and the location of current Circle of Parents sites.

Plenary Presentation: 1:00 pm - 2:00 pm

Overview of Sexual Victimization of Children

Presenter: Kenneth V. Lanning (FBI Retired)

The sexual victimization of children involves varied and diverse dynamics. It can range from one-on-one intrafamilial abuse to multioffender/multivictim extrafamilial sex rings and from stranger abduction of toddlers to prostitution of teenagers. This presentation will discuss historical perspectives, societal attitudes and preferences, specialized responses and their significance for professional interveners.

Workshop Session V: 2:15 pm - 3:45 pm

1. Child Maltreatment in the Setting of Caregiver Mental Illness

Presenters: Lisa Markman, MD, FAAP; Bethany A. Mohr, MD, FAAP

A caregiver's mental illness may be a significant risk factor for child maltreatment. Identifying mental illness in caregivers is crucial in intervention. Oftentimes, patient confidentiality, lack of a clear diagnosis or no diagnosis, poor documentation, or lack of communication between medical providers leads to failing to identify mental illness in a parent or caregiver. Learning to identify signs of mental illness and gaining insight into how various types of mental illness may place children at risk of abuse and neglect is the first step in recognition of high-risk situations and child maltreatment prevention. Once mental illness is identified in a caregiver, several other factors may place a child at even greater risk or may be considered protective. In any case, a multidisciplinary approach in recognizing high-risk environments is essential. The experiences of the University of Michigan Child Protection Team serve to highlight key points in assessing risk of child abuse and neglect in the setting of caregiver mental illness.

2. Poverty, the Economy, and Child Abuse and Neglect

Presenter: Linda Schmidt, MSW

The current economic crisis has spurred a renewed focus on the need to develop more targeted approaches to alleviating the impact of poverty and heightened the need for better awareness of the relationship between poverty and child abuse and neglect. This workshop will present a framework for understanding how we can improve policies and programs aimed at alleviating poverty and how we can more effectively target interventions aimed to help families facing both poverty and abuse / neglect issues.

3. The Role of the Michigan Children's Institute (MCI) in Permanency Planning

Presenter: William J. Johnson

Children who are MCI wards have had the parental rights of their parents terminated. The Department of Human Services is required to make diligent efforts to work toward a permanency planning goal which is appropriate for each child under Department supervision. The MCI office plays an important role in coordination with county DHS offices, private agencies under contract to DHS, attorneys representing children, courts, and families to provide permanency for children. This workshop will explore the various permanency planning options for children and how these efforts can be coordinated.

4. Domestic Violence as it Relates to Child Abuse and Neglect

Presenter: Sgt. Josh Lator

This presentation will focus on a law enforcement perspective on Domestic Violence as it relates to Child Abuse and Neglect. This workshop will walk participants through an actual case which involved multiple children, domestic assault, physical abuse, emotional abuse, sexual assault, animal abuse, child neglect and other dynamics that played a role in a tragic case investigated by a Michigan State Police Post. The workshop will also highlight the importance of cooperation between local DHS professionals, the police and personnel from the local foster care program.

5. Treating Traumatized Children and Trauma Focused Cognitive Behavioral Therapy: Part II

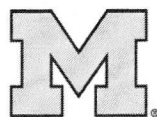
Presenter: Connie Black-Pond MA, LMSW, LPC

Part II will introduce Trauma-Focused Cognitive Behavioral Therapy (TF-CBT) as a treatment method known to reduce PTSD symptomology and related behavioral disturbances. The components of TF-CBT, as well as case examples demonstrating each component will be presented.

6. The Period of PURPLE Crying: Implementing an Evidence-Based Prevention Program

Presenters: Joyce A. Bos, MA; Leigh Moerdyke

The Period of PURPLE Crying is an evidence-based Shaken Baby Syndrome Prevention Program. The program educates parents on how to cope with infant inconsolable crying. The presentation will provide an overview of the program, the implementation structure and how the program is being implemented in Ottawa County, MI and the Western Great Start Regional Resource Center.



University of Michigan
Medical School

**Office of Continuing Medical Education
Department of Medical Education**

G1200 Towsley Center SPC 5201
1500 East Medical Center Drive
Ann Arbor, MI 48109-5201

Phone: (800) 800-0666
Fax: (734) 615-6129
Email:
OCME@umich.edu

Disclosure of Significant Relationships with Relevant Commercial Companies

29th Annual Michigan Statewide Conference on Child Abuse and Neglect
October 18-19, 2010

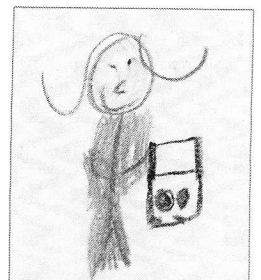
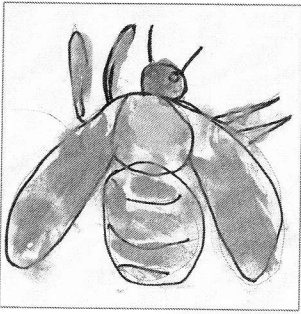
The University of Michigan Medical School endorses the Standards of the Accreditation Council for Continuing Medical Education and the Guidelines of the Association of American Medical Colleges that the sponsors of continuing medical education activities and the speakers at these activities disclose significant relationships with commercial companies whose products are discussed in educational presentations. Disclosure of a relationship is not intended to suggest or condone bias in any presentation, but is made to provide participants with information that might be of potential importance to their evaluation of a presentation.

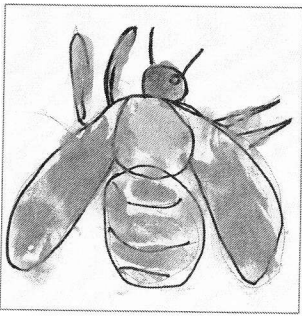
Significant relationships exist with the following companies whose products will be discussed.

<u>Sponsor/Faculty Member</u>	<u>Nature of Relationship</u>	<u>Company</u>
Julie Kaplow, PhD	Grant/Research Support	NIMH
	Other	Guilford Press
Randall Schlievert, MD	Consultant	Lucas County Children Services

All of the following speakers have informed OCME that they have NO relationships with companies whose products will be discussed.

Karla Ahrns Klas, BSN, RN, CCRP	Sgt. Aimee Maike, JD
Oril Klier Avi-Yonah, PhD, LCSW	Teresa Marvin
Connie Black-Pond, MA, MSW, LPC	Leigh Moerdyke
Joyce A. Bos, MA	Bethany A. Mohr, MD, FAAP
Karen Boyce, MS	Maria Muzik, MD
Nancy Colon	Dena Nazer, MD, FAAP
Sylvia J. Brown Jones, LMSW	Dee Obrecht
Catherine S. Connell, LMSW, ACSW	Mary B. Ortega, ACSW, LMSW
Sgt. Stephen Darling	Debra Poole, PhD
Beverly Davidson, LMSW, IMH-E(III)	Detective Sgt. Jay Poupard
Mark Dias, MD, FAAP	Julie Ribaud, ACSW, LMSW, IMH-E(IV)
Kathleen Coulbourn Faller, PhD, ACSW	Kate Rosenblum, PhD
Tracy Green, JD	Vivek Sankaran, JD
Sgt. Nathan Gross	Randal Schlievert, MD
William J. Johnson	Linda Schmidt, MSW
Jacinda Jones	Melisa Schuster, LMSW, CAAC
Darcy Komejan, MA	Suzanne P. Starling, MD, FAAP
Kenneth V. Lanning	Kathleen Strader, MSW
Sgt. Josh Lator	Kori Tudor
Doug Lewis	Jamila Weathers, MSW
Lisa Markman, MD, FAAP	Barbara J. Welke, LMSW





A large, empty rectangular area with horizontal ruling lines, intended for handwritten notes or a drawing.

