



University of Michigan
Medical School

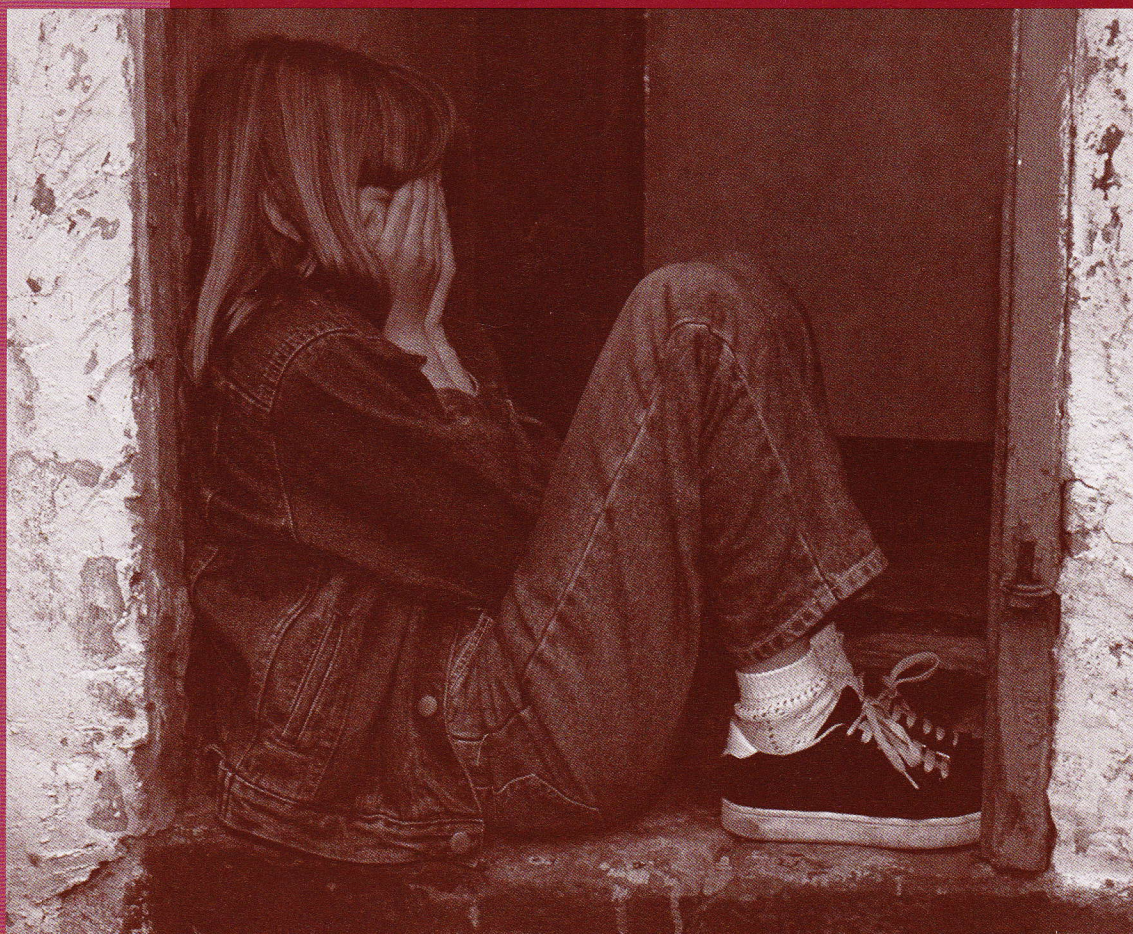
24th Annual
Michigan
Statewide
Conference

Child Abuse and Neglect

*Prevention, Assessment
and Treatment*

October 17-18, 2005

Ypsilanti Marriott, Ypsilanti, Michigan



Co-Sponsored by
University of Michigan Health System's Child Protection Team
University of Michigan Medical School
University of Michigan Mott Children's Hospital

Program Objectives

The conference planners would like to welcome you to the **24th Annual Statewide Conference on Child Abuse and Neglect**. We are pleased to offer an amazing array of keynote speakers, workshops and plenary sessions to provide you with the finest educational experience.

Come and join your colleagues as they gather to work collectively, across all disciplines and cultures, to develop and learn about innovative solutions for preventing, assessing and treating child abuse and neglect.

This conference is designed for all professionals working with children and families, including: child advocates, educators, law enforcement personnel, physicians, nurses, mental health workers, protective services and foster care workers, prevention specialists, attorneys and all others committed to helping communities keep children safe.

Mr. Kenneth Lanning will begin our conference with a keynote entitled, *"Compliant Child Victims: Confronting an Uncomfortable Reality."* Mr. Lanning is currently a private consultant in the area of crimes against children. He was a Special Agent with the FBI for more than 30 years before his retirement in 2000. He specialized in the study of the sexual victimization of children when he was assigned at the FBI Academy in Quantico, Virginia. If you have ever wondered about child sexual exploitation cases involving the use of the internet, you want to attend Mr. Lanning's workshop on *"Cyber Pedophiles."*

On Tuesday, our keynote is noted forensic linguist, **Dr. Anne Graffam Walker**. Dr. Walker will discuss how our assumptions about children's linguistic and cognitive abilities can seriously compromise our ability to ensure that children remain safe. Learn how to take the dangerous assumptions out of your questioning by attending Dr. Walker's interactive workshops on Tuesday afternoon.

Everyone working in the child abuse field knows about stress intimately. We are pleased to have **Dr. Scott Sheperd** provide a plenary session on addressing this issue. Dr. Sheperd uses a humorous but thought-provoking approach that will both challenge you and give you strategies to improve the quality of your life. Look for a more in-depth discussion and how to incorporate these ideas into your workplace and your life in his Tuesday afternoon workshop.

Along with our keynotes and plenary session, there are 25 workshops from which to choose. By attending any of these workshops you will be able to learn and strengthen skills, obtain new perspectives, be challenged and be revitalized. From infancy to parenthood, this year's conference schedule will guide you in your role as a champion for Michigan's families.

On Monday evening, the Michigan Professional Society on the Abuse of Children (MiPSAC) will hold their annual meeting and election of officers. All conference attendees are encouraged to attend to learn about MiPSAC and to become a part of this vital organization.

We look forward to seeing you in October.

On behalf of the planning committee,

Susan Smith, MSW
Course Director

Planning Committee

Arlene Bradford, BA

Assistant Director
Office of Continuing Medical Education
Department of Medical Education

Linda De Vries, MSW

Clinical Social Worker
Child Protection Team
University of Michigan Health System

Tim Kelly, BS

Manager, Child Welfare Institute
Department of Human Services
Lansing, Michigan

Zoë Lyons, BS

Family Advocate Specialist
Department of Human Services
Lansing, Michigan

Elaine S. Pomeranz, MD

Assistant Professor
Division of General Pediatrics
Department of Pediatrics
Assistant Professor
Department of Emergency Medicine
Medical Director
Child Protection Team
University of Michigan Health System

Susan A. Smith, MSW

Course Director
Michigan Statewide Conference on
Child Abuse and Neglect
Coordinator, Child Protection Team
Manager, Abuse Prevention Initiative
University of Michigan Health System

Thank you to the Michigan Professional Society on the Abuse of Children (MiPSAC) for their sponsorship of Tuesday's keynote speaker, Dr. Anne Graffam Walker.

Guest Faculty

Nancy Becker Bennett

Manager
Office of Drug Control Policy
Michigan Department of
Community Health
Lansing, Michigan

Rosalynn Bliss, MSW, CSW

Certified Trauma and Loss Consultant
Child Protection Team
DeVos Children's Hospital
Grand Rapids, Michigan

Annamaria Church, MD

Director
Pediatric Residency Training Program
Interim Medical Director
Child Protection Team
DeVos Children's Hospital
Grand Rapids, Michigan

Laurie Johnson, BSW, MPA

Department Analyst
Children's Protective Services
Program Office
Department of Human Services
Lansing, Michigan

Joseph A. Lanczki

Social Service Specialist
Children's Protective Services
Michigan Department of
Human Services
Ypsilanti, Michigan

Kenneth V. Lanning

FBI (Retired)
Fredericksburg, Virginia

Zoë Lyons, BS

Family Advocate Specialist
Department of Human Services
Lansing, Michigan

Kathleen Rezmierski, JD

Assistant Prosecuting Attorney
Prosecutor's Office
Jackson, Michigan

Julie Ribaud, ACSW

Infant Mental Health Specialist
Interdisciplinary Center for the Family
West Bloomfield, Michigan

Norma Sanchez, MSW

Trainer/Consultant
Child Welfare Institute
Department of Human Services
Lansing, Michigan

Tony Saucedo

Detective Lieutenant
Methamphetamine Investigative Unit
Michigan State Police
Lansing, Michigan

Scott Sheperd, PhD

Author and Speaker
Sylvania, Ohio

Patricia T. Siegel, PhD

Associate Professor
Department of Psychiatry
Pediatric Psychologist
Children's Hospital of Michigan
Wayne State University School
of Medicine
Detroit, Michigan

Mary E. Smyth, MD

Medical Director
Child Protection Team
William Beaumont Hospital
Royal Oak, Michigan

Betsy Soden, BA, MA

Community Educator
(Parent of Affected Child)

Vern Soden

Community Educator
(Parent of Affected Child)

Sauna Tindall, PhD

Pediatric Psychologist
Private Practice
Ann Arbor, Michigan

Anne Graffam Walker, PhD

Forensic Linguist
Falls Church, Virginia

Joyce Wright

Director of Training
Michigan Domestic Violence Prevention
and Treatment Board
Department of Human Services
Lansing, Michigan

University of Michigan Faculty

Leena S. Dev, MD

Physician
Child Protection Team

Linda DeVries, MSW

Clinical Social Worker
Child Protection Team

Kathleen Coulborn Faller, PhD, ACSW

Professor
School of Social Work
Director
Family Assessment Clinic

Marie L. Heys, MS, RN, CS

Adjunct Lecturer
School of Nursing
Coordinator
Fetal Alcohol Diagnosis Clinic
Family Nurse Practitioner
Packard Community Clinic

Tracey S. Oppenheim, MD

Director
Child and Adolescent
Psychiatric Inpatient Program
Department of Psychiatry

Mary B. Ortega, MSW, ACSW

Adjunct Instructor
School of Social Work
Clinic Administrator
Family Assessment Clinic
Supervising Faculty
University Center for the Child
and the Family

Elaine S. Pomeranz, MD

Assistant Professor
Division of General Pediatrics
Department of Pediatrics
Assistant Professor
Department of Emergency Medicine
Medical Director
Child Protection Team

Susan A. Smith, MSW

Course Director
Michigan Statewide Conference on
Child Abuse and Neglect
Coordinator, Child Protection Team
Manager, Abuse Prevention Initiative

Frank E. Vandervort, JD

Clinical Assistant Professor of Law
University of Michigan Law School

Program Schedule - Monday, October 17

(10.75 credits)

Early Registration, Sunday, October 16

6:30-8:00 pm RegistrationYpsilanti Marriott Lobby

Monday Morning, October 17

8:00 Registration and Continental BreakfastYpsilanti Marriott

8:45 Welcome and AnnouncementsArlene Bradford, BA

Opening Remarks..... Elaine S. Pomeranz, MD

Presentation of 2005 MiPSAC Child Advocate Award Elaine S. Pomeranz, MD

9:00 **Keynote: Compliant Child Victims:
Confronting an Uncomfortable Reality** Kenneth V. Lanning, FBI (Retired)

10:15 Break

10:30 Workshop Session I

1. Trauma-focused Cognitive-behavioral Treatment
of Sexually Abused Children and their FamiliesKathleen Coulborn Faller, PhD, ACSW;
Mary B. Ortega, MSW, ACSW

2. Ritalin and Beyond Tracey S. Oppenheim, MD

3. Testifying in Child Protection Proceedings: A Workshop for Frontline Workers Frank E. Vandervort, JD

4. Therapeutic Crisis Intervention Joseph A. Lanczki

5. Methamphetamine in Michigan Nancy Becker Bennett; Detective Lieutenant Tony Saucedo

12:00 Lunch

Afternoon

1:00 Workshop Session II

1. Look Alikes: Conditions Mistaken for Child Abuse Mary E. Smyth, MD

2. Preventing Shaken Baby Syndrome: A Directed Education Approach Rosalynn Bliss, MSW, CSW

3. Cyber "Pedophiles" - **PART I** Kenneth V. Lanning, FBI (Retired)

4. Child Interventions in Domestic Violence Joyce Wright

5. Tips to Avoid Being Trapped by the "Wicked" Defense Attorney Kathleen Rezmierski, JD

2:30 Break

2:45 Workshop Session III

1. Cyber "Pedophiles" - **PART II** Kenneth V. Lanning, FBI (Retired)

2. CSI Myths: What Medicine Can and Cannot Tell You About Child Abuse Elaine S. Pomeranz, MD;
Leena S. Dev, MD; Linda DeVries, MSW; Susan Smith, MSW

3. Failure to Thrive Shauna Tindall, PhD

4. Ritalin and Beyond - **REPEAT** Tracey S. Oppenheim, MD

5. Evaluation and Treatment of Mothers Confirmed
of Munchausen by Proxy Abuse Patricia T. Siegel, PhD

4:15 Session Adjourns

5:00 MiPSAC 10th Annual Meeting

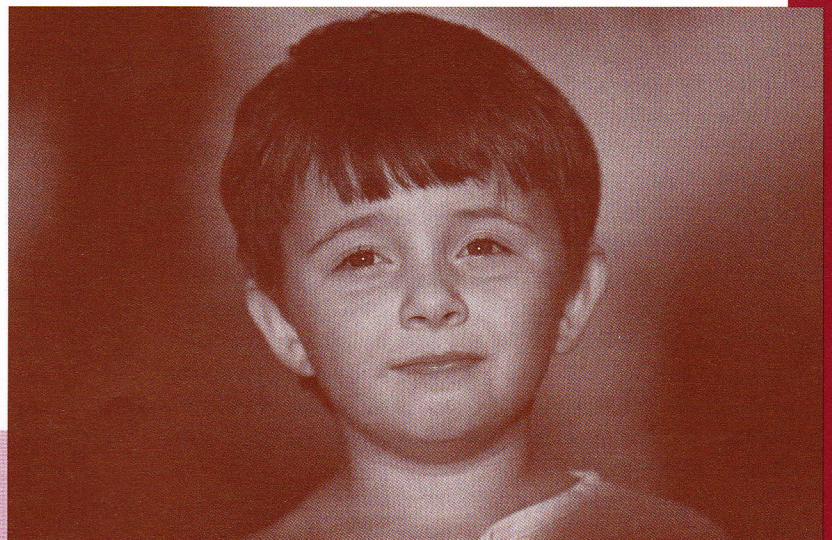
All conference participants are invited to this meeting. Plan to attend to learn more about the
Michigan Professional Society on the Abuse of Children (MiPSAC)

Election of 2006 Officers/Board and Annual Meeting

Program Schedule - Tuesday, October 18

Tuesday Morning, October 18

- 8:00 Registration and Continental BreakfastYpsilanti Marriott Lobby
- 8:45 Announcements
- 9:00 **Keynote: Dangerous Assumptions When We Question Children:
Examples and Consequences** Anne Graffam Walker, PhD
- 10:00 Break
- 10:15 **Workshop Session IV**
1. Taking the Dangerous Assumptions Out
of Our Questioning - **PART I** Anne Graffam Walker, PhD
 2. When A Baby Has Its First Drink Before Birth Marie L. Heys, MS, RN, CS; Vern Soden; Betsy Soden, BA, MA
 3. Evaluating Allegations of Abuse in Cases Involving
Divorce and Custody Disputes Kathleen Coulborn Faller, PhD, ACSW; Mary B. Ortega, MSW, ACSW
 4. It's All in the Relationship: Using Attachment Theory
to Understand Difficult Behavior Julie Ribaudo, ACSW
 5. Methamphetamine in Michigan - **REPEAT** Nancy Becker Bennett; Detective Lieutenant Tony Saucedo
- 11:45 Lunch
- 1:00 **Plenary Session: Don't Manage Your Stress - Rekindle Your Spirit** Scott Sheperd, PhD
- 2:00 Break
- 2:15 **Workshop Session V**
1. Taking the Dangerous Assumptions Out of Our Questioning - **PART II** Anne Graffam Walker, PhD
 2. Don't Manage Your Stress Scott Sheperd, PhD
 3. The Grieving Infant and Toddler Julie Ribaudo, ACSW
 4. Michigan's Child Fatalities: Infant Sleeping Related Deaths
and Safe Sleep Prevention Efforts Laurie Johnson, BSW, MPA; Zoë Lyons, BS
 5. The State of Michigan Munchausen by Proxy Guidelines Norma Sanchez, MSW;
Patricia T. Siegel, PhD; Annamaria Church, MD
- 3:45 Course Adjourns



Monday, October 17, 2005

Keynote: Compliant Child Victims: Confronting an Uncomfortable Reality

The term "compliant" will be used to describe those children who cooperate in or "consent" to their sexual victimization. Because children cannot legally consent to having sex with adults, this compliance should not in any way alter the fact that they are victims of serious crimes. The primary purpose of this presentation is to bring out into the open possible reasons for this compliance and to discuss its complexity and significance for child victims and professional interveners.

Kenneth V. Lanning, FBI (Retired)

WORKSHOP SESSION I - Monday, October 17 10:30-12:00

1. Trauma-focused Cognitive-behavioral Treatment of Sexually Abused Children and their Families

There is an emerging body of research that documents treatments that work with sexually abused children and their families. Practitioners providing treatment to these children need to use these evidence-based treatments. The presenters will describe cognitive-behavioral interventions to address issues of sexual abuse and behavioral sequelae. This approach will be illustrated with a case example.

Kathleen Coulborn Faller, PhD, ACSW;

Mary B. Ortega, MSW, ACSW

2. Ritalin and Beyond

This workshop will serve as an introduction to psychopharmacology in the pediatric population. Goals of this presentation are to provide an overview of the most commonly prescribed psychiatric medications, including the disorders they are used to treat, as well as potential risks and benefits.

Tracey S. Oppenheim, MD

3. Testifying in Child Protection Proceedings: A Workshop for Frontline Workers

This workshop will address the basics of testifying in child protection proceedings. Participants will understand the means of compelling testimony, effective preparation for court appearances, and techniques for courtroom presentation. We will discuss the differences between lay and expert witness testimony, the process for qualifying a witness as an expert and the rules relating to what expert witnesses can and cannot testify about in child protection cases. This workshop will use both didactic presentation and audience participation in the form of role plays to illustrate effective testimony.

Frank E. Vandervort, JD

4. Therapeutic Crisis Intervention

This workshop will guide workers to view crisis situations as opportunities for change. The presenter will discuss how to provide therapeutic interventions in crisis situations, how to become more aware of personal working styles and how these styles can best be used in a crisis situation.

Joseph A. Lanczki

5. Methamphetamine in Michigan

The abuse of methamphetamine - a powerful, long-lasting stimulant with severe health effects - is an extremely serious and growing problem. Although use of methamphetamine initially began in Hawaii before moving to the Western and Southwestern sections of the United States, many Midwestern states have seen dramatic increases in its use. In addition, methamphetamine use among significantly diverse populations has been documented and Michigan is no exception.

This presentation will provide a brief history and current methamphetamine use patterns in Michigan, briefly describe the effects it has and characteristic behaviors observed in a drug user, describe the materials necessary for creating a "meth lab" and describe how this drug impacts children and families. Also provided will be an overview of the state methamphetamine task force and statewide activities and initiatives being undertaken to help combat this dangerous drug.

Nancy Becker Bennett

Detective Lieutenant Tony Saucedo

WORKSHOP SESSION II - Monday, October 17 1:00-2:30

1. Look Alikes: Conditions Mistaken for Child Abuse

Many medical conditions may be mistaken for child abuse. Several case examples will be presented and the lessons learned from these cases will be discussed.

Mary E. Smyth, MD

2. Preventing Shaken Baby Syndrome: A Directed Education Approach

Shaken Baby Syndrome (SBS) is a preventable form of child abuse that affects thousands of children ages 0-3 every year in the United States. With support from the Children's Trust Fund, DeVos Children's Hospital developed and began implementation of the Shaken Baby Prevention Program in October 2000. This program is a directed education campaign for new parents, based on the model from Upstate New York which has shown dramatic reductions in SBS in new parents receiving the program. Data collected on 12,000 parents since October 2000 will be shared. Participants in this workshop will learn common facts about SBS, understand components of the SBS Prevention Program and how to develop and implement an SBS Prevention Program.

Rosalynn Bliss, MSW, CSW

Workshops

3. Cyber "Pedophiles" - PART I

The investigation of child sexual exploitation cases involving computers requires knowledge of the technical, legal and behavioral aspects of computer use. This discussion will focus primarily on the dynamics of offender and victim behavior in the computer exploitation of children. This presentation will discuss types of computer sex offenders, illegal and legal ways they use computers, and how they interact with child victims.

Kenneth V. Lanning, FBI (Retired)

4. Child Interventions in Domestic Violence

This workshop will assist participants in identifying the factors that may facilitate success for children exposed to domestic violence. To do so requires that professionals capture the child's complete story. Discussion will center on the variables in children's exposure to and experiences associated with domestic violence including specific elements of a child's environment that can serve as supportive factors, to be used when designing appropriate interventions.

Joyce Wright

5. Tips to Avoid Being Trapped by the "Wicked" Defense Attorney

This presentation will provide ways to hopefully outsmart the defense attorney and "beat them at their own game." It will talk about ways to get yourself out of a hole while testifying, if you inadvertently step into one. This will be an interactive workshop so questions and discussion are welcomed.

Kathleen Rezmierski, JD

WORKSHOP SESSION III - Monday, October 17 2:45 - 4:15

1. Cyber "Pedophiles" - PART II

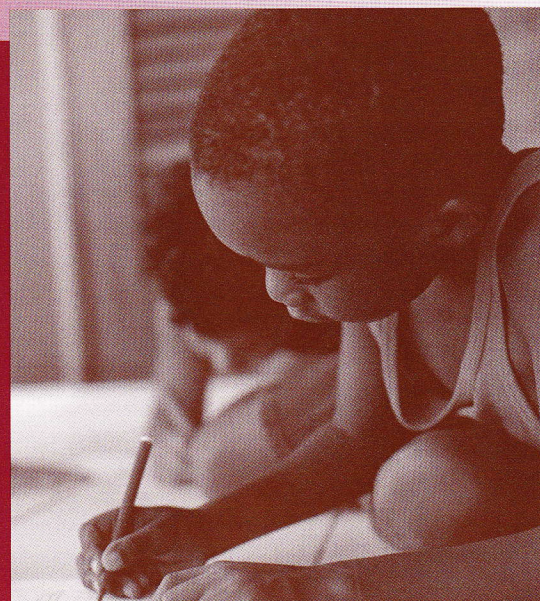
Please note this is a two-part workshop and is a continuation from the 1:00pm workshop.

Kenneth V. Lanning, FBI (Retired)

2. CSI Myths - What Medicine Can and Cannot Tell You About Child Abuse

Can herpes be exacerbated by an allergy to pets? Can an MRI tell exactly when a brain injury occurred? Is herpes always sexually transmitted? The Child Protection Team handles questions like these and more on a daily basis. This workshop will help dispel a few of the myths surrounding some medical procedures and tests and what they can and cannot tell us. You will see the team in action using case examples.

*Elaine S. Pomeranz, MD; Leena S. Dev, MD;
Linda DeVries, MSW; Susan Smith, MSW*



3. Failure to Thrive

In this workshop, all aspects of Failure to Thrive will be covered: definition, causes, effects on child development in the short and long term and treatment guidelines. Special attention will be paid to refeeding syndrome and factitious disorder by proxy.

Shauna Tindall, PhD

4. Ritalin and Beyond - REPEAT

Note: This workshop is a repeat of the 10:30 am workshop.

This workshop will serve as an introduction to psychopharmacology in the pediatric population. Goals of this presentation are to provide an overview of the most commonly prescribed psychiatric medications, including the disorders they are used to treat as well as potential risks and benefits.

Tracey S. Oppenheim, MD

5. Evaluation and Treatment of Mothers Confirmed of Munchausen by Proxy Abuse

This workshop will focus on the assessment and treatment of parents confirmed of Munchausen by Proxy (MBP) abuse. Participants will be provided an overview of MBP abuse and a multidisciplinary approach to managing MBP cases. A review of the literature regarding treatment outcome of MBP perpetrators as well as case examples illustrating treatment outcome of MBP cases will be presented.

Patricia T. Siegel, PhD

Tuesday, October 18, 2005

Keynote: Dangerous Assumptions When We Question Children: Examples and Consequences

Our system of justice is seriously compromised by the assumptions adults make about children's linguistic and cognitive capabilities. In this address, Dr. Walker will present seven instances in which those assumptions played a part in creating dangerous outcomes for both children and adults.

Anne Graffam Walker, PhD

Tuesday, October 18 - WORKSHOP SESSION IV 10:15-11:45

1. Taking the Dangerous Assumptions Out of Our Questioning - PART I

All of us approach an interview with certain assumptions. In an investigatory interview with a child, assumptions about children's language and cognitive development can mean the difference between an appropriate and inappropriate outcome. These two interactive workshops (Part II at 2:15pm) offer an overview of those assumptions, as well as some practical ways to counteract them. Participants will be doing some small group work as part of their exploration of these dangerous assumptions.

Anne Graffam Walker, PhD

2. When A Baby Has Its First Drink Before Birth

Using a PowerPoint presentation, participants will learn what Fetal Alcohol Syndrome is and how it occurs. A video, "The Early Years," will be viewed and participants will hear Vern and Betsy Soden's personal experience raising a Fetal Alcohol Affected child.

*Marie L. Heys, MS, RN, CS; Vern Soden;
Betsy Soden, BA, MA*

3. Evaluating Allegations of Abuse in Cases Involving Divorce and Custody Disputes

Allegations of abuse, especially sexual abuse, raise a great deal of skepticism when they occur in the context of a divorce or custody dispute. The presenters will summarize the research findings related to such allegations, will present a model for evaluating the allegations of children and family members, and will offer guidelines for case management. They will employ a case example to illustrate the evaluation and case management process and strategies.

*Kathleen Coulborn Faller, PhD, ACSW;
Mary B. Ortega, MSW, ACSW*

4. It's All in the Relationship: Using Attachment Theory to Understand Difficult Behavior

Children form mental templates of relationships in their first 12 to 18 months of life. These "mental maps" affect how they interpret and adjust to a variety of settings, including child care, school, foster care and adoption. In this workshop, types of attachment styles will be highlighted, along with concrete approaches to understanding and altering styles which lead to difficult behavior in young children. Application to older children will also be briefly explored.

Julie Ribaud, ACSW

5. Methamphetamine in Michigan - REPEAT

Note: This workshop is a repeat of Monday's 10:30am workshop.

The abuse of methamphetamine - a powerful, long-lasting stimulant with severe health effects - is an extremely serious and growing problem. Although use of methamphetamine initially began in Hawaii before moving to the Western and Southwestern sections of the United States, many Midwestern states have seen dramatic increases in its use. In addition, methamphetamine use among significantly diverse populations has been documented and Michigan is no exception.

This presentation will provide a brief history and current methamphetamine use patterns in Michigan, briefly describe the effects it has and characteristic behaviors observed in a drug user, describe the materials necessary for creating a "meth lab" and describe how this drug impacts children and families. Also provided will be an overview of the state methamphetamine task force and statewide activities and initiatives being undertaken to help combat this dangerous drug.

*Nancy Becker Bennett
Detective Lieutenant Tony Saucedo*

Tuesday, October 18 - 1:00 pm

Plenary Session: Don't Manage Your Stress - Rekindle Your Spirit

Dr. Sheperd uses a humorous but thought-provoking approach that both challenges the audience to accept responsibility for their own lives, and gives them strategies to improve the quality of those lives. "The specific situations people are facing are not as critical to me as what they bring to those situations. All of us are facing life, whether it's a changing workplace, job layoff, serious illness, or other personal problems. Our attitudes, the way we think, what we value, and how hard we are willing to work, all determine how we are going to handle those situations. Rekindling the spirit is about rediscovering our own power in our lives, the importance of being there for each other, and our passion for living, working, and making a difference."

Scott Sheperd, PhD

Workshops

Tuesday, October 18 - Workshop Session V
2:15-3:45

1. Taking the Dangerous Assumptions Out of Our Questioning - PART II

Please note this is a two-part workshop and is a continuation from the 10:30 am workshop.

Anne Graffam Walker, PhD

2. Don't Manage Your Stress

This workshop is a more in-depth discussion of putting Dr. Sheperd's ideas in your workplace and your life.

Scott Sheperd, PhD

3. The Grieving Infant and Toddler

Infants and toddlers express grief, loss and trauma in ways that can be easily misunderstood and thus misaddressed. Using video clips, this workshop will help participants understand the unique ways young children react to loss, and suggest concrete ways to assist them in coping with their sadness and anger.

Julie Ribaud, ACSW

4. Michigan's Child Fatalities: Infant Sleeping Related Deaths and Safe Sleep Prevention Efforts

Michigan is embarking on an exciting collaborative prevention effort, with the goal of decreasing the number of infant related sleeping deaths in the state. Several state and private agencies, including the Departments of Community Health, Education and Human Services along with the Michigan Public Health Institute, Tomorrow's Child and Children's Trust Fund are involved in an effort to reach all Michigan citizens with important sleep information for our most vulnerable population—our babies. This presentation will examine the analysis of child fatalities in Michigan and then show participants what is available with regard to prevention of child death related to infant sleep.

Laurie Johnson, BSW, MPA

Zoë Lyons, BS

5. The State of Michigan Munchausen By Proxy Guidelines

The State of Michigan Governor's Task Force on Children's Justice issued a publication in 2002 to guide practitioners on cases of suspected Munchausen By Proxy. This publication, "Munchausen By Proxy, A Collaborative Approach to Investigation, Assessment and Treatment" was the result of work by a multidisciplinary task force. This workshop will use case presentations to review the guidelines, illustrate how systematic use of the guidelines will assist in separating Munchausen By Proxy from other types of pediatric condition falsification and highlight some of the lessons learned in the evaluation and management of these complex cases.

Norma Sanchez, MSW; Patricia T. Siegel, PhD;

Annamaria Church, MD

General Information

Date and Time:

Monday and Tuesday, October 17-18, 2005

Early Registration: Sunday, 6:30 pm, October 16, 2005

Registration: Monday, 8:00 am, October 17, 2005

Course Adjourns: Tuesday, 3:45 pm, October 18, 2005

Location:

Ypsilanti Marriott

1275 Huron Street South

Ypsilanti, Michigan 48197

Conference Fee: \$250

Conference fee includes continental breakfasts, lunches, refreshments, and program materials.

Registration:

You are urged to register as soon as you are certain of attending as we cannot guarantee educational materials or lunch for applicants who are not preregistered and prepaid by October 3, 2005. Checks should be payable to the University of Michigan (US currency). Cancellations postmarked seven or more days prior to the course are fully refunded. Cancellation notifications postmarked and received from then until the beginning of the course are refunded at 50%. There are no refunds issued after the course begins.

Confirmation and Further Information:

Conference registrations will be confirmed by mail. If you do not receive confirmation, or if the information is in question, call the Registrar at (800) 800-0666, or (734) 763-1400.

Accreditation:

The University of Michigan Medical School is accredited by the Accreditation Council for Continuing Medical Education (ACCME) to sponsor continuing medical education for physicians. The University of Michigan Medical School designates this educational activity for a maximum of 10.75 category 1 credits toward the AMA Physician's Recognition Award. Each physician should claim only those credits that he/she actually spent in the educational activity. An application has been submitted to the American Osteopathic Association and the University of Michigan Extension Service for credits. MCOLES credit for Michigan Law Enforcement officers has been approved for 11 hours. Other credits by specialty may apply.

Recording the Program:

Recording the program with tape recorders not requiring podium microphones is permitted for the registrant's personal use.

3:45 Course Adjourns

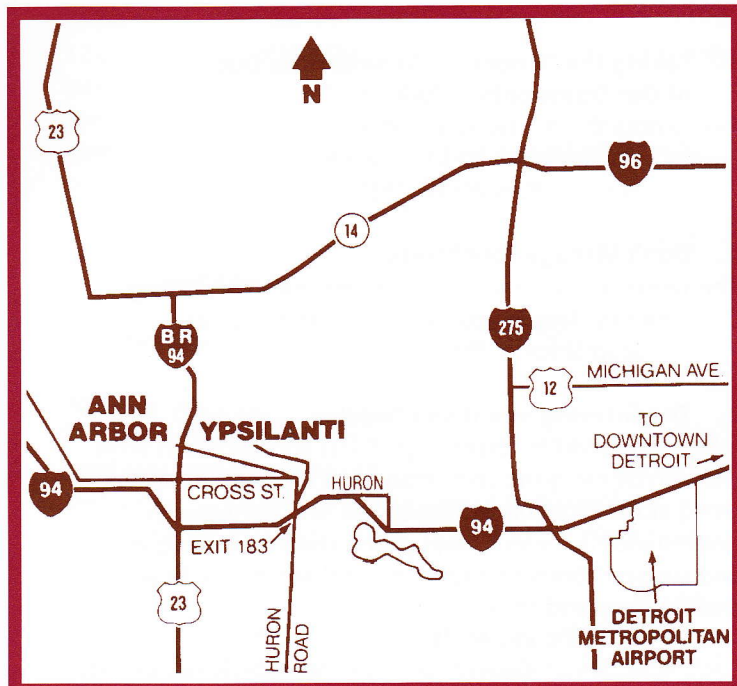
Travel and Lodging

Ypsilanti Marriott, Ypsilanti, Michigan

Located at Interstate 94 and Huron Street, Ypsilanti Marriott is serenely situated within the privacy of a 186-acre resort setting, away from city traffic, adjacent to Ann Arbor, yet fifteen minutes away from Detroit Metropolitan International Airport.

Room rates are listed on the reservation form. Additional persons per room can be accommodated at no additional charge. Smoking or non-smoking preference is required to accept reservations.

Reservations must be made by September 16, 2005. On September 17, 2005, rooms will be released and hotel reservations will be accepted on a space-available basis. When making reservations, rooms must be guaranteed for late arrival. If cancelled less than 24 hours prior to scheduled check-in, the first night's stay will be charged. Check-in time is 3:00 pm and check-out time is 12:00 noon. On the final day of the course the hotel will hold baggage in a central room to accommodate those who wish to check out by noon and remain for the rest of the meeting day.



Hotel Reservation Form

Child Abuse and Neglect

Ypsilanti Marriott October 17-18, 2005

Mail to: Reservations, Ypsilanti Marriott at Eagle Crest
1275 Huron Street South
Ypsilanti, MI 48197
Phone: (734) 487-2000
Fax: (734) 487-0773

Hotel Reservation Deadline: September 16, 2005

Arrival Date _____

Departure Date _____

Name _____

Address _____

City _____

State/Zip _____

Phone _____

E-mail Address _____

Please Reserve:

_____ \$114 Single/Double

_____ Smoking Room _____ Non-Smoking Room
(must choose one for reservation to be confirmed)

_____ Handicapped Accessible Room

10 Government rooms are available on a first come, first serve basis for \$70 per night. Please call for availability.

Special Requests: _____

Guarantee Room to my Credit Card:

_____ Visa _____ MC _____ AMEX

Account Number _____

Exp. Date _____

Signature _____

When making reservations, rooms must be guaranteed for late arrival. If cancelled less than 24 hours prior to scheduled check-in, the first night's stay will be charged. Upon check-in, all guests will be required to establish credit for incidental charges by either a credit card imprint or a cash deposit. Rooms are subject to 8% sales and occupancy tax.

Registration Form

Child Abuse and Neglect: Prevention, Assessment and Treatment October 17-18, 2005



Return to: Registrar
Office of Continuing Medical Education,
University of Michigan Medical School
P.O. Box 1157, Ann Arbor, Michigan 48106-1157
Phone: (734) 763-1400 or (800) 800-0666
Fax: (734) 936-1641 E-mail: OCME@umich.edu

Course Registration Deadline Date: October 3, 2005
Hotel Reservation Deadline: September 16, 2005

1 Personal Information - (Please print)

Name _____ Title _____
Street Address _____
City and State or Province _____ Zip/Postal Code _____
Phone Number (____) _____ Fax Number(____) _____
E-mail _____ Special Dietary Requirements or Other Needs _____
Last four digits of your Social Security Number _____ (To ensure accuracy of your records)
Please Check Your Specialty:
Agency Affiliation _____ Location _____

<input type="checkbox"/> Children's Protective Services Worker	<input type="checkbox"/> Hospital Social Worker	<input type="checkbox"/> Pediatrician	<input type="checkbox"/> Psychologist
<input type="checkbox"/> Clergy or Church Worker	<input type="checkbox"/> Juvenile Court Judge	<input type="checkbox"/> Prevention Services Worker	<input type="checkbox"/> Substance Abuse Counselor
<input type="checkbox"/> Family Physician	<input type="checkbox"/> Lawyer	<input type="checkbox"/> Private Therapist	<input type="checkbox"/> Teacher
<input type="checkbox"/> Foster Care Worker	<input type="checkbox"/> Law Enforcement	<input type="checkbox"/> Psychiatrist	<input type="checkbox"/> Other _____
<input type="checkbox"/> General Practitioner	<input type="checkbox"/> Nurse		

2 Workshops - Please check one workshop in each session:

WORKSHOPS - SESSION I - Monday Morning 10:30-12:00

- _____ 1. Trauma-focused Cognitive-behavioral Treatment of Sexually Abused Children and their Families
_____ 2. Ritalin and Beyond
_____ 3. Testifying in Child Protection Proceedings: A Workshop for Frontline Workers
_____ 4. Therapeutic Crisis Intervention
_____ 5. Methamphetamine in Michigan

WORKSHOPS - SESSION II - Monday Afternoon 1:00-2:30

- _____ 1. Look Alikes: Conditions Mistaken for Child Abuse
_____ 2. Preventing Shaken Baby Syndrome: A Directed Education Approach
_____ 3. Cyber "Pedophiles" - PART I
_____ 4. Child Interventions in Domestic Violence
_____ 5. Tips to Avoid Being Trapped by the "Wicked" Defense Attorney

WORKSHOPS - SESSION III - Monday Afternoon 2:45-4:15

- _____ 1. Cyber "Pedophiles" - PART II
_____ 2. CSI Myths: What Medicine Can and Cannot Tell You About Child Abuse
_____ 3. Failure to Thrive

- _____ 4. Ritalin and Beyond - REPEAT
_____ 5. Evaluation and Treatment of Mothers Confirmed of Munchausen by Proxy Abuse

WORKSHOPS - SESSION IV - Tuesday Morning 10:15-11:45

- _____ 1. Taking the Dangerous Assumptions Out of Our Questioning - PART I
_____ 2. When a Baby Has Its First Drink Before Birth
_____ 3. Evaluating Allegations of Abuse in Cases Involving Divorce and Custody Disputes
_____ 4. It's All in the Relationship: Using Attachment Theory to Understand Difficult Behavior
_____ 5. Methamphetamine in Michigan - REPEAT

WORKSHOPS - SESSION V - Tuesday Afternoon 2:15-3:45

- _____ 1. Taking the Dangerous Assumptions Out of Our Questioning - PART II
_____ 2. Don't Manage Your Stress - PART II
_____ 3. The Grieving Infant and Toddler
_____ 4. Michigan's Child Fatalities: Infant Sleeping Related Deaths and Safe Sleep Prevention Efforts
_____ 5. The State of Michigan Munchausen by Proxy Guidelines

3 Payment - Enclose check (U.S. currency) payable to the University of Michigan or complete credit card information below:

Fees - Please indicate payment amount

_____ \$250 Conference Fee
_____ \$160 One-Day Fee _____ Monday _____ Tuesday

☐ I will be attending the Michigan Professional Society on the Abuse of Children, Inc. Annual Meeting, Monday, October 17, 5:00 pm.

Credit Card Payment: ☐ Mastercard ☐ Visa

Cardholder Name: _____

Account Number: _____

Exp. Date: _____

Signature: _____

Registration Code: B1D EH KP B2Q NC

Please mention this code at the time of registration

**24th Annual
Michigan
Statewide
Conference**

Child Abuse and Neglect

*Prevention, Assessment
and Treatment*



**October 17-18, 2005
Ypsilanti Marriott,
Ypsilanti, Michigan**



**University of Michigan
Medical School**

Department of Medical Education
Towsley Center for Continuing
Medical Education
1500 E. Medical Center Drive
Ann Arbor, Michigan 48109-0201

NON-PROFIT
ORGANIZATION
U.S. POSTAGE
PAID
ANN ARBOR, MICH.
PERMIT NO. 144

CME WEBSITE FEATURES

CME Calendar

Search by date or by specialty in our calendar of live CME courses. On-line registration is available on our new secure server that ensures the privacy of your personal information. View course brochures on-line. It's easy.

Go to: <http://cme.med.umich.edu>

Internet Self Study

Instant CME credit for on-line study at home or office is available at no cost through our Internet self-study site. We feature UM HEALTH SYSTEM CLINICAL CARE GUIDELINES for Common Primary Care Conditions. It's fast.

Go to: <http://cme.med.umich.edu>