



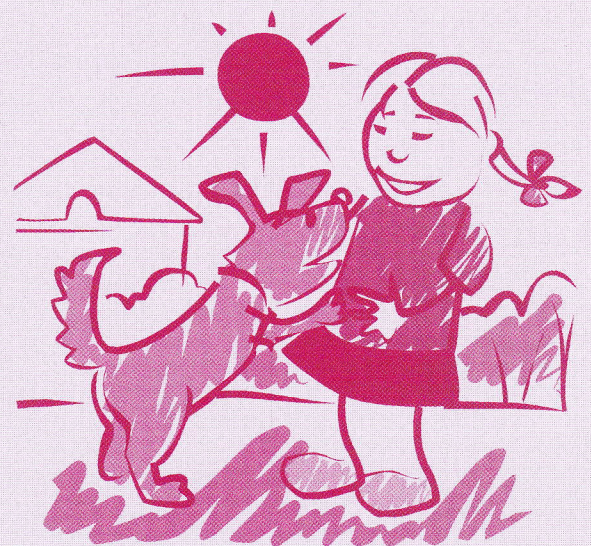
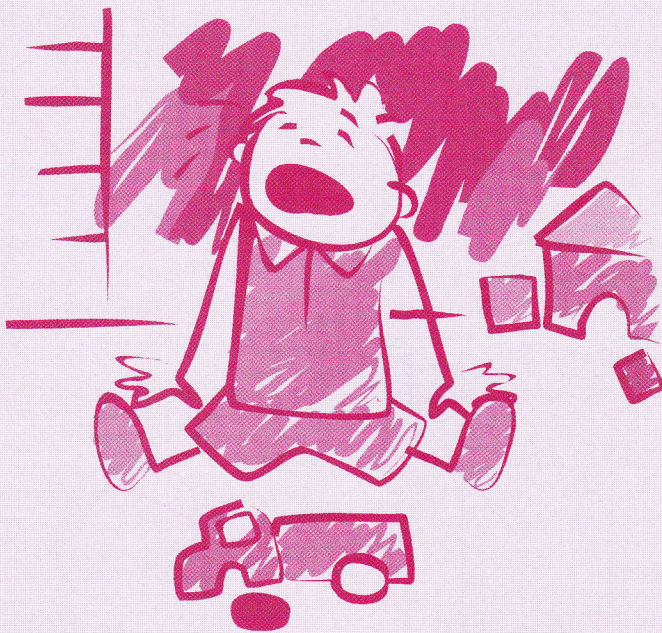
University of Michigan
Medical School

23rd Annual
Michigan Statewide Conference

Child Abuse and Neglect

*Prevention, Assessment,
and Treatment*

October 25-26, 2004
Ypsilanti Marriott
Ypsilanti, Michigan



Co-Sponsored by
University of Michigan Health Systems' Child Protection Team
University of Michigan Medical School
University of Michigan Mott Children's Hospital

Program Objectives

Welcome to the 23rd Annual Child Abuse and Neglect Conference to be held at the Marriott Hotel in Ypsilanti. We hope the presentations will inspire you in both your career and your personal life to help change and improve the life of a child. As we've heard so many times, our children are our future. We must work to keep their lives safe and stable and void of the violence that can numb their own potential as human beings and future leaders. This year's schedule will bring you inspiration and knowledge and will compel you in your role as an advocate for children and families; and an advocate for change.

This conference is designed for all professionals working with children and families including: law enforcement personnel, physicians, nurses, mental health professionals, protective services and foster care workers, prevention specialists, attorneys, teachers, social workers, psychologists, psychiatrists and all others interested in keeping our children and families safe and working toward lessening the violence in our society.

Dr. Harvey Karp is back by popular demand and is our Monday keynote speaker. His presentation, "Help! There is a Neanderthal in my Kitchen-An Effective New Approach to Understand and Communicate with Toddlers," will provide new insights in understanding and living with toddlers. If you would like to learn about the "off switch" for crying and five ways to turn on the calming reflex and soothe fussy infants, then Dr. Karp's workshop session, "Stop Shaken Baby Syndrome: Effective New Strategies for Calming Colic," is the place to be.

A 2002 report from the National Clearinghouse on Child Abuse and Neglect estimated that 896,000 children were determined to be victims of child abuse or neglect. More than 60% of those child victims experienced neglect. Our Tuesday keynote speaker, Dr. Donna Rosenberg, will address the topic of child neglect, with a special focus on intervention.

Teri Covington, Director of the National Center for Child Death Review and Senior Program Director of the Michigan Child Death Review and Dr. Vince Palusci, Director of Devos Children's Hospital's Child Protection Team will present the findings of a three year study in their plenary session entitled "Making Every Child Maltreatment Death Count: The Results of the Michigan Maltreatment Surveillance Project." This presentation will also describe implications for field workers to better investigate and respond to physical abuse and neglect to prevent child deaths.

Along with the keynotes and plenary session, there are 25 workshops from which to choose. By attending any of these workshops you will be able to learn and strengthen skills, obtain new perspectives, be challenged and be revitalized. From infancy to parenthood, this year's conference schedule will guide you in your role as a champion for Michigan's families.

On Monday evening, the Michigan Professional Society on the Abuse of Children (MiPSAC) will hold their annual meeting and election of officers. All conference attendees are encouraged to attend to learn about MiPSAC and to become a part of this vital organization.

We look forward to seeing you at the 23rd Annual Conference.

On behalf of the planning committee

Susan Smith, MSW
Course Director

Planning Committee

James E. Beougher, MSW
Director
Washtenaw and Livingston
County
Michigan Family
Independence Agency
Ann Arbor and Howell
Michigan

Arlene Bradford, BA
Assistant Director
Office of Continuing
Medical Education
Department of Medical
Education

Linda De Vries, MSW
Clinical Social Worker
Child Protection Team
University of Michigan
Health System

Tim Kelly, BS
Children's Protective Services
Training Supervisor
Michigan Family
Independence Agency
Lansing, Michigan

Zoe Lyons, BS
Family Advocate Specialist
Office of Family Advocate
Michigan Family
Independence Agency
Lansing, Michigan

Elaine S. Pomeranz, MD
Clinical Professor
Department of Pediatrics
and Communicable Diseases
Medical Director
Child Protection Team
University of Michigan
Health System

Susan Smith, MSW
Course Director
Michigan Statewide
Conference on
Child Abuse and Neglect
Coordinator
Child Protection Team
Manager
Abuse Prevention Initiative
University of Michigan
Health System



Course Faculty

Guest Faculty

Amado Arceo

Detective Lieutenant
Michigan State Police
Bridgeport, Michigan

Connie Black-Pond, MA

Clinical Director
Southwest Michigan Children's Trauma
Assessment Center
Kalamazoo, Michigan

Rosalynn Bliss, MSW

Certified Trauma and Loss Consultant
Child Protection Team
DeVos Children's Hospital
Grand Rapids, Michigan

Teri Covington, MPH

Director
National Center for the Child Death Review
Senior Program Director
Michigan Child Death Review Program
Public Health Institute
Okemos, Michigan

Pat A. Crum, BA

Parent Counselor
Child Protection Team
DeVos Children's Hospital
Grand Rapids, Michigan

Katie Doyle, MSW, CSW

Associate Director
Project Speak Out Youth Poets
Ozone House
Ann Arbor, Michigan

Stephen Goodrum, MA, MDIV

Program Coordinator
Marillac Outreach Services
Young Fatherhood Program
Southfield, Michigan

Penny Hackett-Evans, MA

Trainer
Michigan Domestic Violence Prevention
and Treatment Board
Michigan Family Independence Agency
Lansing, Michigan

James Henry, PhD

Associate Professor
School of Social Work
Project Director
Southwest Michigan Children's Trauma
Assessment Center
College of Health and Human Services
Western Michigan University
Kalamazoo, Michigan

Derrick Jackson, MSW

Director of Outreach and Education
Ozone House
Ann Arbor, Michigan

Harvey Karp, MD, CA

Assistant Professor of Pediatrics
University of California-Los Angeles
School of Medicine
Los Angeles, California

Danielle Karsies, RD, AFAA

Certified Aerobics Instructor
Pinckney, Michigan

Barry Kaufman, PhD

Psychologist
Children's Services
Prevention Specialist
Community Mental Health
Lansing, Michigan

Michael Kildee

Family-Community Support Coordinator
Bendle/Carmen-Ainsworth
Learning Community
Flint, Michigan

Amy Mack, MSW

Training Coordinator
Southwest Michigan Children's Trauma
Assessment Center
Kalamazoo, Michigan

Judith Minton, CFLE

Owner and Principle Speaker
VoiceWorks Seminars
Canton, Michigan

Scott A. Nichols

Trooper
Michigan State Police
Lansing, Michigan

Vincent J. Palusci, MD, MS

Child Protection Team
DeVos Children's Hospital
Grand Rapids, Michigan
Associate Professor
Pediatrics and Human Development
Michigan State University
East Lansing, Michigan

Kathleen Rezmierski, JD

Assistant Prosecutor
Michigan Family Independence Agency
Lansing, Michigan

Julie Ribaudo, MSW, ACSW

Infant Mental Health Specialist
Interdisciplinary Center for the Family
West Bloomfield, Michigan

Donna Rosenberg, MD

Assistant Professor of Pediatrics
University of Colorado School of Medicine
Denver, Colorado

Patricia T. Siegel, PhD

Associate Professor
Department of Psychiatry and Psychology
Pediatric Psychologist
Children's Hospital of Michigan
Wayne State University School of Medicine
Detroit, Michigan

Susan C. Smolinske, PharmD

Associate Professor
Department of Pediatrics
Managing Director
Children's Hospital of Michigan
Regional Poison Center
Wayne State University
Detroit, Michigan

Marie Snodgrass

Family-Community Support Coordinator
Bendle/Carmen-Ainsworth
Learning Community
Flint, Michigan

Duane M. Wilson

Training Consultant
Michigan Family Independence Agency
National Training Consultant
The Nurturing Fathers Program
East Lansing, Michigan

University of Michigan Faculty

Lori L. Brinkey, MPT

Physical Therapy Clinical Specialist
Department of Physical Medicine
and Rehabilitation

Kathleen A. Diehl, ACSW

Clinical Social Worker
Adult Psychiatry
Department of Psychiatry

Elaine S. Pomeranz, MD

Clinical Assistant Professor
Department of Pediatrics
and Communicable Diseases
Medical Director
Child Protection Team
University of Michigan Health System

Katharene K. Schoof, MSW, ACSW

Clinical Social Worker II
Child and Adolescent Psychiatry
Depression Program
Department of Psychiatry

Frank E. Vandervort, JD

Visiting Clinical Assistant Professor of Law
Program Manager
The Michigan Child Welfare Law
Resource Center
University of Michigan Law School

Program Schedule, Monday, October 25

(11 Credits)

Early Registration, Sunday, October 24

6:30-8:00 pm Registration Ypsilanti Marriott Lobby

Monday Morning, October 25

8:00 Registration and Continental Breakfast Ypsilanti Marriott

8:45 Welcome and Announcements Arlene Bradford, BA

Opening Remarks Elaine Pomeranz, MD

Presentations of 2004 MiPSAC Child Advocate Award Elaine Pomeranz, MD

HERO Award Recognition Michigan Family Independence Agency

9:15 **Keynote: Help! There's a Neanderthal in my Kitchen-An Effective
New Approach to Understand and Communicate with Toddlers** Harvey Karp, MD, CA

10:15 Break

10:30 Workshop Session I

1. Michigan Fatherhood Coalition:
What About Working with Those Fathers? Michael Kildee; Stephen Goodrum, MA, MDIV; Barry Kaufman, PhD;
Marie Snodgrass; Duane Wilson

2. Environmental Effects of Drugs on Children Susan Smolinske, PharmD

3. Effects of Domestic Violence on Children Penny Hackett-Evans, MA

4. Youth Voices, Youth Work: **PART I** Derrick Jackson, MSW; Katie Doyle, MSW, CSW

5. Stop Shaken Baby Syndrome: Effective New Strategies for Calming Colic Harvey Karp, MD, CA

12:00 Lunch

Afternoon

1:00 Workshop Session II

1. Renew Your Personal Battery Judith Minton, CFLE

2. How to Recognize a Clandestine Lab Scott Nichols

3. Effects of Domestic Violence on Children-**REPEAT** Penny Hackett-Evans, MS

4. Complex Trauma in Children: The Neurodevelopmental Impact James Henry, PhD; Connie Black-Pond, MA;
Amy Mack, MSW

5. Youth Voices, Youth Work: **PART II** Derrick Jackson, MSW; Katie Doyle, MSW, CSW

2:30 Break

2:45 Workshop Session III

1. Recent Developments in Michigan Law Relating to Fatherhood:
Their Impact on Child Protective Proceedings Frank Vandervort, JD

2. Environmental Effects of Drugs on Children-**REPEAT** Susan Smolinske, PharmD

3. Personality Disorders and Parenting Kathleen Diehl, ACSW; Katharene Schoof, MSW, ACSW

4. Start Your Day Out Right Danielle Karsies, RD, AFSA

5. Misbehavior Misunderstood: Recognizing and Responding
to Children Who Have Experienced a Traumatic Event Pat Crum, BA; Rosalynn Bliss, MSW

4:15 Session Adjourns

5:00 MiPSAC Ninth Annual Meeting

All conference participants are invited to this free evening event. Plan to attend and learn more about the Michigan Professional Society on the Abuse of Children (MiPSAC).

Election of the 2005 Officers/Board and Annual Meeting

Program Schedule, Tuesday, October 26

Tuesday Morning, October 26

- 8:00 Registration and Continental Breakfast *Ypsilanti Marriott*
- 8:45 Announcements
- 9:00 **Keynote: Child Neglect** *Donna Rosenberg, MD*
- 10:15 Break
- 10:30 **Workshop Session IV**
1. A Collaborative Approach to Investigation, Assessment, and Treatment of Munchausen By Proxy *Patricia Siegel, PhD*
 2. Effective Perpetrator Interviewing Techniques *Amado Arceo*
 3. How to Recognize a Clandestine Lab-REPEAT *Scott Nichols*
 4. Grieving Infants and Toddlers: What Do We See, What Do They Need? *Julie Ribaud, MSW, ACSW*
 5. Sexual Abuse: Medical Diagnosis *Donna Rosenberg, MD*
- 12:00 Lunch

Afternoon

- 1:00 **Plenary Session: Making Every Child Maltreatment Death Count: Results of the Michigan Maltreatment Surveillance Project** *Teri Covington, MPH; Vincent Palusci, MD, MS*
- 2:15 Break
- 2:30 **Workshop Session V**
1. Lawyers and Doctors Working Together for Effective Adjudication of Child Abuse Cases *Elaine Pomeranz, MD; Kathleen Rezmierski, JD*
 2. Transporting Kids? What You Need to Know About Child Passenger Safety *Lori Brinkey, MPT*
 3. Sibling Attachments and Placement Considerations *Julie Ribaud, MSW, ACSW*
 4. Complex Trauma in Children: The Neurodevelopmental Impact-REPEAT *James Henry, PhD; Connie Black-Pond, MA; Amy Mack, MSW*
 5. Surviving as a Professional in Child Abuse and Neglect *Donna Rosenberg, MD*
- 4:00 Course Adjourns



Workshops

Monday, October 25, 2004

Keynote: Help! There's a Neanderthal in my Kitchen-An Effective New Approach to Understand and Communicate with Toddlers

Dr. Karp will explain why it is appropriate to think of toddlers' cognitive and developmental level as being on par with little cavemen and how that makes parents of toddlers like ambassadors from the 21st Century to the "Neanderthal People."

Harvey Karp, MD

WORKSHOP SESSION I - Monday, October 25 10:30-12:00

1. Michigan Fatherhood Coalition: What About Working with Those Fathers?

A panel of practitioners working with fathers will discuss programming that has been successful in advocating for fathers and getting fathers more involved in the lives of their children. Panelists and participants will share ideas and strategies for working effectively with fathers and men raising children.

*Michael Kildee; Stephen Goodrum, MA, MDIV;
Barry Kaufman, PhD; Marie Snodgrass; Duane Wilson*

2. Environmental Effects of Drugs on Children

This workshop will discuss the environmental impact on children of exposure to substances of abuse. Specifically, detection and adverse effects of passive inhalation of cocaine and marijuana and exposure to chemicals used in methamphetamine manufacturing on health of children will be explored.

Susan C. Smolinske, PharmD

3. Effects of Domestic Violence on Children

This workshop will look at both the negative and even potentially empowering effects that domestic violence can have on children, focusing on the factors that help determine the outcomes for children based on research done at Michigan State University. Specific interventions that may be helpful for children will also be discussed.

Penny Hackett-Evans, MA

4. Youth Voices, Youth Work: PART I

In our efforts to provide for the best interests of youth, the voices of youth themselves too often are silenced. Service planning that truly is in the best interest of youth involves more than professional and academic knowledge and experience. Instead, effective service planning with adolescents engages youth as equal and active partners. There is no "one size fits all" method for working with youth. A Positive Youth Development framework provides opportunities, across settings, for youth to determine their path toward becoming healthy and productive adults.

This workshop will offer specific methods for integrating and honoring youth voices and experiences in your practice with adolescents. The first part of this 2-part session features youth poetry and commentary, Adolescents from Project Speak Out, a youth-led initiative in which youth teach and support each other to express themselves through the spoken and written word, will perform and answer questions regarding "How can we as professionals work with and talk with youth?"

Derrick Jackson, MSW; Katie Doyle, MSW, CSW

5. Stop Shaken Baby Syndrome: Effective New Strategies for Calming Colic

An important antecedent to SBS is a caregiver's frustration due to a baby's crying. Researchers have shown that 1 in 6 babies is brought to a health care professional because of irritability. We routinely tell parents nothing can be done for persistent crying (colic), yet anthropological research has revealed numerous cultures around the world where prolonged infant crying is unknown.

In a radical paradigm shift, Dr. Karp demonstrates that Western culture's conceptualization of the first three months of life is incorrect. In many ways, newborns are not ready for the world at birth, they still need a protected environment. . . a fourth trimester. He will present extensive information clarifying why the missing fourth trimester (and not gas, immaturity or temperament) is the true cause of persistent crying in infancy.

You will learn about a previously unknown neonatal reflex: the calming reflex. This extraordinary reflex is nature's "off-switch" for a baby's crying reflex.

You will also learn about the 5 S's - five simple ways of activating the calming reflex by imitating the uterine sensory milieu (Swaddle, Side/stomach position, Shhhh, Swing, Suck).

These inexpensive, "low-tech" techniques can easily be taught to expectant and new parents. Once caregivers learn effective ways to calm frantic newborns they gain increased confidence, self-esteem and feelings of attachment with the babies.

Of great value is that this approach can be done especially well by men, the perpetrators of the vast majority of SBS.

Harvey Karp, MD, CA

WORKSHOP SESSION II - Monday, October 25 1:00-2:30

1. Renew Your Personal Battery

Renew Your Personal Battery is a program that focuses on uncovering sources of renewing energy. As professionals who are committed to the well being of others, we often push ourselves into giving others "our very best" and saving little or nothing for ourselves. This can only continue for so long before we put ourselves into "energy deficit."

If you find yourself living a life of too many ups and downs, and want to develop a way of achieving balance and peace of mind. . . this workshop is for you. The presenter will share the techniques she uses to "stay off the rollercoaster" and chill out.

Door prizes, chocolate and great information!

Judith Minton, CFLE

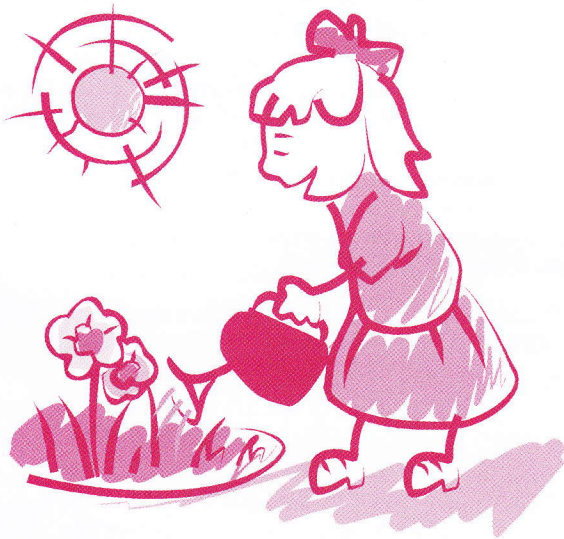
2. How to Recognize a Clandestine Lab

This presentation will discuss the production, use, and distribution of methamphetamine. Attendees will see how to recognize a clandestine lab and the dangers associated with the production of methamphetamine. Photographs from recent "clan labs" discovered in Michigan will be provided as part of the class instruction.

Scott Nichols

Workshops

WORKSHOP SESSION III - Monday, October 25 2:45-4:15



3. Effects of Domestic Violence on Children-REPEAT

This workshop will look at both the negative and even potentially empowering effects that domestic violence can have on children. This workshop will focus on the factors that help determine the outcomes for children based on research done at Michigan State University. Specific interventions that may be helpful for children will also be discussed.

Penny Hackett-Evans, MA

4. Complex Trauma in Children: The Neurodevelopmental Impact

Child development is vulnerable to innumerable harmful intrusions that can seriously limit children from reaching their potential. Prenatal alcohol exposure and maltreatment by parents arguably have the most deleterious impact across multiple domains. Often such children have experienced repeated traumatic events that continue to overwhelm their ability to cope and adapt to their environments. Research indicates that biology, attachment, cognition, affect regulation, behavioral control and self concept can be significantly altered. This workshop will outline a complex trauma model (NCTSN, 2003) that offers a new understanding of these children. Specific findings from neurodevelopmental, behavioral and psychosocial testing from over a thousand children assessed at the Southwest Michigan Children's Trauma Assessment Center will be reported. Interventions that target children with complex traumatization and their caregivers will also be presented.

James Henry, PhD; Connie Black-Pond, MA; Amy Mack, MSW

5. Youth Voices, Youth Work: PART II

Part two of the session explores how Ozone House effectively works with youth by involving youth as partners in their own development. Using a combination of didactic training and participant involvement, the presenters will create opportunities for participants to integrate their existing knowledge and expertise with new ways of incorporating the experience and voices of youth.

Derrick Jackson, MSW; Katie Doyle, MSW

1. Recent Developments in Michigan Law Relating to Fatherhood: Their Impact on Child Protective Proceedings

This presentation will focus on recent developments in Michigan law relating to paternity, putative fathers, and legal fatherhood. It will address the roots of the laws' approach to fatherhood, address the need to provide legal notice of proceedings, temporary wardship and termination of parental rights. We will discuss the difference between a "legal father," a "putative father" and a "biological father." The workshop will address the rights and responsibilities of these groups of individuals. It will also address the legal mechanisms available for establishing a legal relationship between a biological father and child. Finally, we will discuss placement and permanency planning options with each type of father.

Frank Vandervort, JD

2. Environmental Effects of Drugs on Children-REPEAT

The workshop will discuss the environmental impact on children of exposure to substances of abuse. Specifically, detection and adverse effects of passive inhalation of cocaine and marijuana, and exposure to chemicals used in methamphetamine manufacturing, on health of children, will be explored.

Susan Smolinske, PharmD

3. Personality Disorders and Parenting

Some of our most challenging clients have personality disorders AND children! This session will briefly define and overview the more prevalent and challenging personality disorders, how the disorders can impact parenting skills, and how the children may be affected over the short and long term. Some strategies to maximize the likelihood of effectively engaging these parents will be provided.

Kathleen Diehl, ACSW; Katharene Schoof, MSW, ACSW

4. Start Your Day Out Right

Did you know that a good diet helps you withstand stress better and that regular physical activity can improve your mental health and outlook on life? This 1 1/2 hour session will help you to use diet and exercise as stress reducers.

You will also learn strategies for healthy eating, even when time is limited, and how to exercise at your desk for relaxation and strengthening.

Danielle Karsies, RD, AFAA

5. Misbehavior Misunderstood: Recognizing and Responding to Children Who Have Experienced a Traumatic Event

Behavioral changes due to trauma are often misread as resistance, stubbornness, over-reaction, impulsiveness, and confrontation. This presentation will focus on recognizing and effectively responding to children who are exhibiting trauma reactions.

Pat Crum, BA; Rosalynn Bliss, MSW

Workshops

Tuesday, October 26, 2004

Keynote: Child Neglect

This topic includes a review of various forms of child neglect. Emphasis is given to definitions and diagnostic criteria for each of these forms of neglect, and there will be some discussion of the backgrounds and capabilities of neglectful parents, which is necessary for a review of treatment strategies. The session will focus on intervention. While some interventions are attractive in theory, Dr. Rosenberg will emphasize those treatment techniques that have been shown to be practically and realistically applicable with this particular population of parents. Also, direct treatment of neglected children, from a practical standpoint, is reviewed.

Donna Rosenberg, MD

WORKSHOP SESSION IV - Tuesday, October 26 10:30-12:00

1. A Collaborative Approach to Investigation, Assessment, and Treatment of Munchausen by Proxy

The goal of this presentation is to present a multidisciplinary approach that guides various professionals, including physicians, psychologists, social workers, child protection workers, foster care workers, law enforcement, and attorneys, through the detection, investigation, legal proceedings, and treatment of Munchausen by Proxy (MBP) child abuse. Participants will learn the definitions of the two diagnostic components necessary in making a MBP diagnosis and the roles of each discipline during each stage. Actual cases where this multidisciplinary approach has been successfully used will be presented.

Patricia T. Siegel, PhD

2. Effective Perpetrator Interviewing Techniques

While appropriate interviews of children are vital to any investigation, effective interviews of alleged perpetrators are imperative as well. This workshop will focus on how to complete strong interviews of alleged perpetrators that will assist the investigator in making decisions regarding the facts of their case. Participants will learn to pay attention to the choice of words and what body language can tell us about how truthful someone is being during an interview.

Amado Arceo, Michigan State Police

3. How to Recognize a Clandestine Lab-REPEAT

This presentation will discuss the production, use and distribution of methamphetamine. Attendees will see how to recognize a clandestine lab and the dangers associated with the production of methamphetamine. Photographs from recent "clan labs" discovered in Michigan will be provided as part of the class instruction.

Scott Nichols

4. Grieving Infants and Toddlers: What Do We See, What Do They Need?

Infants and toddlers experience grief and loss in ways that are expressed differently than older children. This workshop will use video and case discussion to explore assessment and response to infants who are grieving. Concrete recommendations for meeting their needs during this time will be addressed.

Julie Ribaudo, MSW, ACSW

5. Sexual Abuse: Medical Diagnosis

This workshop is devoted to physical diagnosis of sexual abuse, the extent and limitation of interpretation of various physical findings, and how to understand what the medical reports are saying. Sexually transmitted diseases (their presence and specificity) and rape kits are also reviewed. Current knowledge of the relationship between sexual abuse and pediatric AIDS is reviewed to reflect current knowledge.

Donna Rosenberg, MD

Tuesday, October 26 1:00 pm

Plenary Session: Making Every Child Maltreatment Death Count: Results of the Michigan Maltreatment Surveillance Project

For many years, the State of Michigan reported to the federal government that an average of 14 children died every year due to abuse or neglect. The source of the estimates was the death certificates from the Michigan Office of Vital Statistics. Nationally it is estimated that 1,300 children die annually from abuse and neglect. It is, however, widely believed that these numbers are significantly lower than the real count of abuse and neglect fatalities. As part of national efforts to develop a better and more accurate way to count fatal maltreatment, the Centers for Disease Control and Prevention funded Michigan, as one of five states, to develop innovative strategies to get a more accurate count. For the past three years, a multidisciplinary team has worked to bring together data from four sources: death certificates, FIA Reports of Minor Deaths, Child Death Review Reports and State Police Homicide reports. The findings have been striking. Instead of the 14-16 child abuse deaths a year, the team identified over 70 deaths in 2001 alone: half to physical abuse and half to neglect.

This presentation will describe the teams' methods used to count the deaths, the criteria used to identify abuse and neglect, mathematical models to help predict more accurate counts, circumstances of the deaths, and implications for persons in the field to better investigate and respond to physical abuse and neglect in order to prevent these tragic deaths of children in Michigan.

Teri Covington, MPH; Vincent Palusci, MD, MS

WORKSHOP SESSION V - Tuesday, October 26 2:30-4:00

1. Lawyers and Doctors Working Together for Effective Adjudication of Child Abuse Cases

This will be an interactive session, utilizing participation by a multi-disciplinary audience. The goal is to suggest a more effective strategy for doctors and lawyers to communicate and utilize each others' strengths in planning for court testimony in child abuse cases.

Elaine Pomeranz, MD; Kathleen Rezmierski, JD

2. Transporting Kids? What You Need to Know about Child Passenger Safety

An overview of child passenger safety laws and best practice recommendations will be presented. There will be a discussion about selecting and securing children in appropriate child passenger safety restraints and what resources may be available in your community.

Lori Brinkey, MPT

Workshops

3. Sibling Attachments and Placement Considerations

Understanding and meeting the needs of individual children in a sibling group often requires an in-depth understanding of the sibling relationships. This workshop will explore some primary areas to consider when placing siblings in care.

Julie Ribaud, MSW, ACSW

4. Complex Trauma in Children: The Neurodevelopmental Impact-REPEAT

Child development is vulnerable to innumerable harmful intrusions that can seriously limit children from reaching their potential. Prenatal alcohol exposure and maltreatment by parents arguably have the most deleterious impact across multiple domains. Often such children have experienced repeated traumatic events that continue to overwhelm their ability to cope and adapt to their environments. Research indicates that biology, attachment, cognition, affect regulation, behavioral control, and self concept can be significantly altered. This workshop will outline a complex trauma model (NCTSN, 2003) that offers a new understanding of these children. Specific findings from neurodevelopmental, behavioral and psychosocial testing from over a thousand children assessed at the Southwest Michigan Children's Trauma Assessment Center will be reported. Interventions that target children with complex traumatization and their caregivers will also be presented.

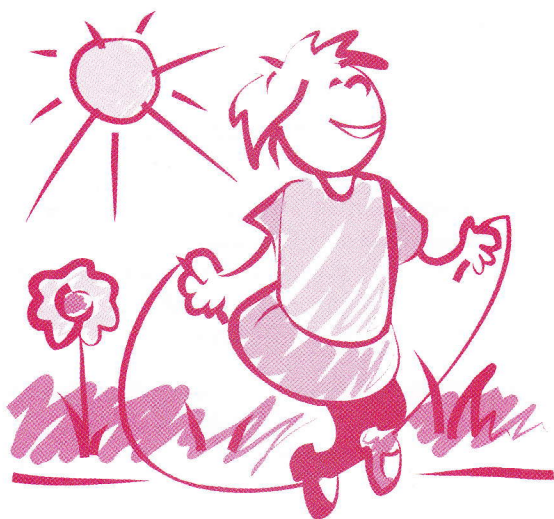
James Henry, PhD; Connie Black-Pond, MA; Amy Mack, MSW

5. Surviving as a Professional in Child Abuse and Neglect

This is a tough field for anyone to work in. Unfortunately, professionals often suffer through this work with much personal pain and frustration, compounded by few resources to help them survive and succeed. Turnover is high as are, too often, the emotional costs to individuals.

This session is personal, not prescriptive. I have been working in the area of child abuse and neglect for 22 years, and I keep re-writing this talk. I have found no overarching certainties, except that survival - without emotional failure to thrive - is a work in progress.

Donna Rosenberg, MD



General Information

Date and Time:

Monday and Tuesday, October 25-26, 2004

Early Registration: Sunday, 6:30 pm, October 24, 2004

Registration: Monday, 8:00 am, October 25, 2004

Course Adjourns: Tuesday, 4:00 pm, October 26, 2004

Location

Ypsilanti Marriott

1275 Huron Street South

Ypsilanti, Michigan 48197

Conference Fee \$240

Conference fee includes continental breakfasts, lunches, refreshments, and program materials.

Registration

You are urged to register as soon as you are certain of attending as we cannot guarantee educational materials or lunch for applicants who are not preregistered and prepaid by October 11, 2004. Checks should be payable to the University of Michigan (US currency). Cancellations postmarked seven or more days prior to the course are fully refunded. Cancellation notifications postmarked and received from then until the beginning of the course are refunded at 50%. There are no refunds issued after the course begins.

Confirmation and Further Information

Conference registrations will be confirmed by mail. If you do not receive confirmation, or if the information is in question, call the Registrar at (800) 800-0666, or (734) 763-1400.

Accreditation

The University of Michigan Medical School is accredited by the Accreditation Council for Continuing Medical Education (ACCME) to sponsor continuing medical education for physicians. The University of Michigan Medical School designates this educational activity for a maximum of 11 category 1 credits toward the AMA Physician's Recognition Award. Each physician should claim only those credits that he/she actually spent in the educational activity. An application has been submitted to the American Osteopathic Association and the University of Michigan Extension Service for credits. MCOLES credit for Michigan Law Enforcement officers has been approved for 11 hours. Other credits by specialty may apply.

Recording the Program

Recording the program with tape recorders not requiring podium microphones is permitted for the registrant's personal use.

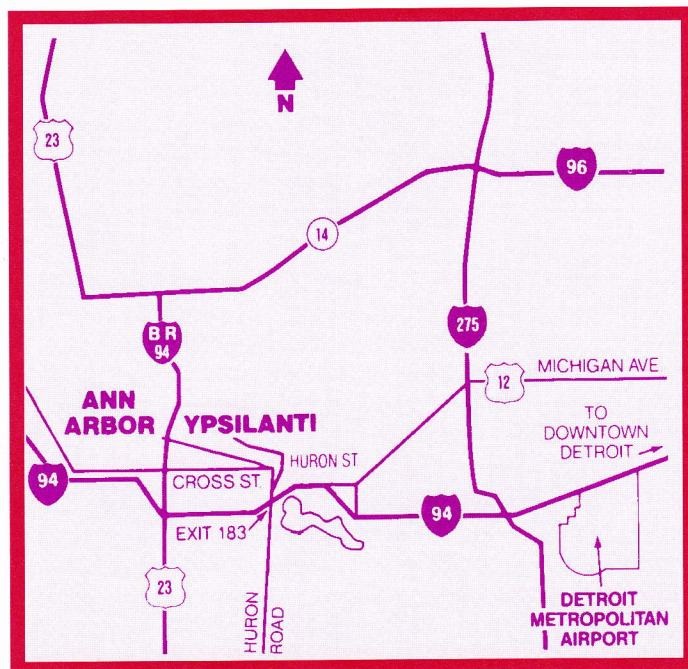
Travel and Lodging

Ypsilanti Marriott, Ypsilanti, Michigan

Located at Interstate 94 and Huron Street, Ypsilanti Marriott is serenely situated within the privacy of a 186-acre resort setting, away from the city traffic, adjacent to Ann Arbor, yet fifteen minutes away from Detroit Metropolitan International Airport.

Room rates are listed on the reservation form. Additional persons per room can be accommodated at no additional charge. Smoking or non-smoking preference is required to accept reservations.

Reservations must be made by October 3, 2004. On October 4, 2004, rooms will be released and hotel reservations will be accepted on a space-available basis. When making reservations, rooms must be guaranteed for late arrival. If cancelled less than 24 hours prior to scheduled check-in, the first night's stay will be charged. Check-in time is 3:00 pm and check-out time is 12:00 noon. On the final day of the course the hotel will hold baggage in a central room to accommodate those who wish to check out by noon and remain for the rest of the meeting day.



Hotel Reservation Form

Child Abuse and Neglect

Ypsilanti Marriott October 25-26, 2004

Mail to: Reservations, Ypsilanti Marriott
1275 Huron Street South
Ypsilanti, MI 48197
Phone: (734) 487-2000
Fax: (734) 487-0773

Hotel Reservation Deadline: October 3, 2004

Arrival Date _____

Departure Date _____

Name _____

Address _____

City _____

State and Zip _____

Phone _____

E-mail Address _____

Please Reserve:

_____ \$107 Single/Double

_____ Smoking Room _____ Non-Smoking Room

_____ Handicapped Accessible Room

(must choose one for reservation to be confirmed)

Special Requests: _____

Guarantee Room to my Credit Card:

_____ Visa _____ MC _____ AMEX

Number _____

Exp. Date _____

When making reservations, rooms must be guaranteed for late arrival. **If cancelled less than 24 hours prior to scheduled check-in, the first night's stay will be charged.** Upon check-in, all guests will be required to establish credit for incidental charges by either a credit card imprint or a cash deposit. Rooms are subject to 8% sales and occupancy tax.

Course Registration

Child Abuse and Neglect Conference October 25-26, 2004

Return to: Registrar

Office of Continuing Medical Education, University of Michigan Medical School
P. O. Box 1157, Ann Arbor, Michigan 48106-1157
Phone: (734) 763-1400 or (800) 800-0666
Fax: (734) 936-1641 E-mail: OCME@umich.edu

**Course Registration Deadline Date: October 11, 2004****Hotel Reservation Deadline: October 3, 2004**

U008703

1 Personal Information *(Please print)*

Name _____ Title _____

Address _____

City and State or Province _____ Zip/Postal Code _____

Phone Number (____) _____ Fax Number(____) _____

E-mail _____

Last four digits of your Social Security Number _____ I will require vegetarian meals

*(To ensure accuracy of your records)***Please Check Your Specialty:**

- | | | | |
|--|---|---|--|
| <input type="checkbox"/> Children's Protective Services Worker | <input type="checkbox"/> Hospital Social Worker | <input type="checkbox"/> Pediatrician | <input type="checkbox"/> Psychologist |
| <input type="checkbox"/> Clergy or Church Worker | <input type="checkbox"/> Juvenile Court Judge | <input type="checkbox"/> Prevention Services Worker | <input type="checkbox"/> Substance Abuse Counselor |
| <input type="checkbox"/> Family Physician | <input type="checkbox"/> Lawyer | <input type="checkbox"/> Private Therapist | <input type="checkbox"/> Teacher |
| <input type="checkbox"/> Foster Care Worker | <input type="checkbox"/> Law Enforcement | <input type="checkbox"/> Psychiatrist | <input type="checkbox"/> Other _____ |
| <input type="checkbox"/> General Practitioner | <input type="checkbox"/> Nurse | | |

2 Workshops**Please check one workshop in each session:****WORKSHOPS – SESSION I – Monday Morning 10:30-12:00**

- _____ 1. Michigan Fatherhood Coalition: What About Working with Those Fathers?
- _____ 2. Environmental Effects of Drugs on Children
- _____ 3. Effects of Domestic Violence on Children
- _____ 4. Youth Voices, Youth Work: PART I
- _____ 5. Stop Shaken Baby Syndrome: Effective New Strategies for Calming Colic

WORKSHOPS – SESSION II – Monday Afternoon 1:00-2:30

- _____ 1. Renew Your Personal Battery
- _____ 2. How to Recognize a Clandestine Lab
- _____ 3. Effects of Domestic Violence on Children (Repeat)
- _____ 4. Complex Trauma in Children: The Neurodevelopmental Impact
- _____ 5. Youth Voices, Youth Work: PART II

WORKSHOPS – SESSION III – Monday Afternoon 2:45-4:15

- _____ 1. Recent Developments in Michigan Law Relating to Fatherhood: Their Impact on Child Protective Proceedings
- _____ 2. Environmental Effects of Drugs on Children (Repeat)
- _____ 3. Personality Disorders and Parenting

- _____ 4. Start Your Day Out Right
- _____ 5. Misbehavior Misunderstood: Recognizing and Responding to Children Who Have Experienced a Traumatic Event

WORKSHOPS – SESSION IV – Tuesday Morning 10:30-12:00

- _____ 1. A Collaborative Approach to Investigation, Assessment, and Treatment of Munchausen by Proxy
- _____ 2. Effective Perpetrator Interviewing Techniques
- _____ 3. How to Recognize a Clandestine Lab (Repeat)
- _____ 4. Grieving Infants and Toddlers: What Do We See, What Do They Need?
- _____ 5. Sexual Abuse: Medical Diagnosis

WORKSHOPS – SESSION V – Tuesday Afternoon 2:30-4:00

- _____ 1. Lawyers and Doctors Working Together for Effective Adjudication of Child Abuse Cases
- _____ 2. Transporting Kids? What You Need to Know About Child Passenger Safety
- _____ 3. Sibling Attachments and Placement Considerations
- _____ 4. Complex Trauma in Children: The Neurodevelopmental Impact (Repeat)
- _____ 5. Surviving as a Professional in Child Abuse and Neglect

3 Payment**Enclosed is a check (U.S. currency) payable to the University of Michigan for:**

_____ \$240 Conference Fee

_____ \$150 One-Day Fee _____ Monday _____ Tuesday

- ☐ I will be attending the Michigan Professional Society on the Abuse of Children, Inc. Annual Meeting, Monday, October 25, 5:00-6:30 pm

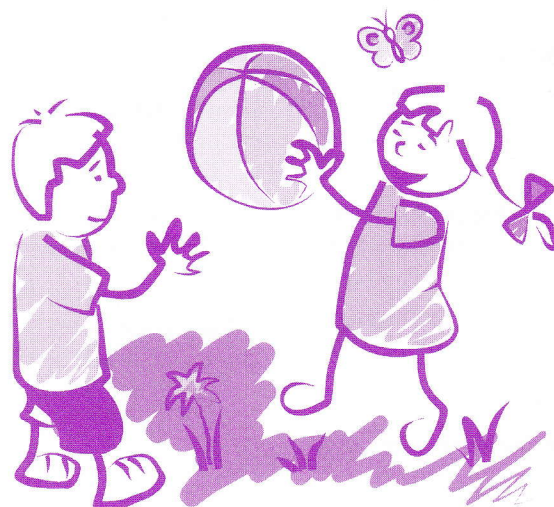
4 Registration Code:**B1D****EH****KP****B2Q****NC**

Please mention this code at the time of registration

23rd Annual
Michigan Statewide Conference

Child Abuse and Neglect

October 25-26, 2004
Ypsilanti Marriott, Ypsilanti, Michigan



Department of Medical Education
Towsley Center for Continuing
Medical Education
1500 E. Medical Center Drive
Ann Arbor, Michigan 48109-0201

NON-PROFIT
ORGANIZATION
U.S. POSTAGE
PAID
ANN ARBOR, MICH.
PERMIT NO. 144

CME WEBSITE FEATURES

CME Calendar

Search by date or by specialty in our calendar of live CME courses. On-line registration is available on our new secure server that ensures the privacy of your personal information. View course brochures on-line. It's easy.

Go to: <http://cme.med.umich.edu>

Internet Self Study

Instant CME credit for on-line study at home or office is available at no cost through our Internet self-study site. We feature UM HEALTH SYSTEM CLINICAL CARE GUIDELINES for Common Primary Care Conditions. It's fast.

Go to: <http://cme.med.umich.edu>